

Banlaw Product Catalogue

Contents

Click on any subject to go directly to that page

A word from the Managing Director	3	Fluid Transfer	24	Overfill Protection	48	Tools, Replacement Parts & Accessories	68
Refuelling	4	Classic	25	FillSafe Power	49	Tools	69
Dry Break Nozzles	5	Coolant	26	Controller	50	Refueling Tools	69
800 Series Nozzle	6	Crankcase	27	Level Switch	52	Receiver Socket	69
1000 Series Nozzle	7	Hydraulic	28	Harness	53	Fluid Transfer Tools	69
Underground Nozzle	8	Transmission	29	Electric Actuated Valve	53	Lubecentral Socket	69
Dry Break Receivers	9	Push-to-Connect	30	Check Valve	53	Overfill Protection Tools	69
800 Series Receiver	10	R Series	30	FillSafe Zero	54	Flow Control Valve Socket	69
1000 Series Receiver	11	Grease	31	Flow Control Valve	55	Replacement Parts	70
Underground Receiver	12	Flush Face	32	800 Series FCV	55	Refuelling Kits	70
Check Valve Receiver	13	Evacuation	33	1000 Series FCV	56	Break Away Valve Repair Kit	70
Shells	14	Bulk Fluid Transfer	34	Level Sensor	57	Nozzle Repair Kit	70
Bolt Mount Shell	15	Grease Transfer	35	Vented Level Sensor	58	Check Valve Receiver Kit	70
Weld Mount Shell	15	Size 0	36	Pilot Line	59	Vent Servicing Kit	70
Vents	16	Size 1	37	Fuel Management	60	Refuelling Receiver Cap	70
Unfiltered	17	Size 2	38	Dry Break Auto ID	61	Accessories	71
Unfiltered - Low Profile	18	Size 3	39	Dry Break Nozzle - Auto ID	62	Refuelling Accessories	71
Filtered 10µm	19	Size 4	40	Dry Break Receiver - Auto ID	63	Receiver Shell Drop Tube	71
Fine Filtered 3µm	20	Size 5	41	Swivel - Auto ID	64	Dry Break Nozzle Adapter	71
Swivels	21	Size 6	42	Break Away Valve - Auto ID	64	Vent Adaptor	71
Dry Break Swivel	22	Size 7	43	Fillsafe Zero - Auto ID	64	Holsters & Anchors	72
Splash Fill Swivel	22	Size 8	44	Splash Fill Auto ID	65	Fluid Transfer Accessories	73
Break Away Valves	23	Size 9	45	Splash Fill Nozzle - Auto ID	66	Receiver Cap - Fluid Transfer	73
		Size 10	46	Splash Fill Ring - Auto ID	67	Nozzle Cap - Fluid Transfer	74
		Size 11	47			Fuel Management Accessories	74
						Splash Fill Gateway Terminal	74
						Splash Fill Coil Clamps	74

A word from the Managing Director:

Thank you for your interest in Banlaw's products.

We've been creating premium-quality solutions for liquid transfer, measurement, and control for 37 years. With well over 500 products in this catalogue spanning Refuelling, Fluid Transfer, Overfill Protection, and Fuel Management, we've got you covered.


The Banlaw team is highly focused on managing and mitigating your risk and solving your fluid transfer problems; so if you're planning a tricky install, or you just don't know which item to choose, give us a call.

Banlaw are serious about safety, contamination control, and maximising your productivity. Don't risk your employee and equipment safety by purchasing inferior parts. Using quality Banlaw products means less risk to your business. Our hard-wearing products help you to refuel and service machines **Cleaner, Faster, Safer!**

We are the refuelling specialists. Don't risk it - call us!

Yours in refuelling safety,

Bill Clifton



Banlaw's hard-wearing products help users of industrial fluids to refuel and service machines quickly, and safely.

We engineer integrated transfer, measurement, control equipment and systems to manage high value liquid resources.

Our products are trusted by mining, railway, construction, and haulage companies the world over.



Refuelling

Banlaw refuelling products have provided users with industry-leading flow rates, durability, and operator safety for almost 40 years.

Our Dry Break refuelling equipment is the most reliable on the market.



Go to

[Dry Break Nozzles](#)

[Dry Break Receivers](#)

[Shells](#)

[Vents](#)

[Swivels](#)

[Break Away Valves](#)

Refuelling

Dry Break Nozzles

Banlaw refuelling nozzles offer the highest reliable flow rate capability, and have a proven safety record.

The dependable ball locking mechanism ensures our nozzles cannot 'fly off', and Dry Break design minimises leaks and spills.

Our nozzles are of all-metal construction which dramatically extends their serviceable life.

A global network of Authorised Nozzle Repairers means timely and cost-efficient repair and refurbishment services are always close at hand, ensuring superior total cost of ownership.

Go to

[800 Series Nozzle](#)

[1000 Series Nozzle](#)

[Underground Nozzle](#)



800 Series Nozzle

Our 800 Series refuelling nozzles are the natural choice for most high flow, industrial diesel filling applications.

They incorporate automatic shut-off functionality when installed with correctly matched receivers and tank vents, and are suitable for use with diesel fuel and similar fluids.

The 800 Series connects with the most commonly encountered Dry Break receiver size. It is therefore completely interchangeable with other equipment brands, simplifying the process of upgrading to a Banlaw solution



Part Number	Product Description	Tech Specs	Shipping Specs	Items Included
BAHS5	Nozzle Dry-Break 800 Series Bulk Fill 2" NPTF, Hydraulic	2" NPTF		Plug
BAMS5	Nozzle Dry-Break 800 Series Bulk Fill 2" NPTF, Mining	2" NPTF	Weight - 2.25kg	Plug
BNH800L	Nozzle Dry-Break 800 Series 2" NPTF, Hydraulic Light	2" NPTF, LT	Dimensions - 48x20x12cm Weight - 3.9kg	Plug
BNH800M	Nozzle Dry-Break 800 Series 2" NPTF, Hydraulic Medium	2" NPTF, MED	Dimensions - 48x20x12cm Weight - 3.9kg	Plug
BNM800H	Nozzle Dry-Break 800 Series 2" NPTF, Mining Heavy	2" NPTF, HVY	Dimensions - 48x20x12cm Weight - 3.9kg	Plug
BNM800H-CT	Nozzle Dry-Break 800 Series 2" NPTF, Mining Heavy - Cold Temp	2" NPTF, HVY, CT	Dimensions - 48x20x12cm Weight - 3.9kg	Plug
BNM800L	Nozzle Dry-Break 800 Series 2" NPTF, Mining Light	2" NPTF, LT	Dimensions - 48x20x12cm Weight - 3.9kg	Plug
BNM800L-CT	Nozzle Dry-Break 800 Series 2" NPTF, Mining Light - Cold Temp	2" NPTF, LT, CT	Dimensions - 48x20x12cm Weight - 3.9kg	Plug
BNM800M	Nozzle Dry-Break 800 Series 2" NPTF, Mining Medium	2" NPTF, MED	Dimensions - 48x20x12cm Weight - 3.9kg	Plug
BNM800M-CT	Nozzle Dry-Break 800 Series 2" NPTF, Mining Medium - Cold Temp	2" NPTF, MED, CT	Dimensions - 48x20x12cm Weight - 3.9kg	Plug
BNM800MH	Nozzle Dry-Break 800 Series 2" NPTF, Mining Medium-Heavy	2" NPTF, MED HVY	Dimensions - 48x20x12cm Weight - 3.9kg	Plug
BNM800MH-CT	Nozzle Dry-Break 800 Series 2" NPTF, Mining Medium-Heavy - Cold Temp	2" NPTF, MED HVY, CT	Dimensions - 48x20x12cm Weight - 3.9kg	Plug
BNM800ML	Nozzle Dry-Break 800 Series 2" NPTF, Mining Light-Medium	2" NPTF, MED LT	Dimensions - 48x20x12cm Weight - 3.9kg	Plug
BNM800ML-CT	Nozzle Dry-Break 800 Series 2" NPTF, Mining Light-Medium - Cold Temp	2" NPTF, MED LT, CT	Dimensions - 48x20x12cm Weight - 3.9kg	Plug
BNR800L	Nozzle Dry-Break 800 Series 2" NPTF, Rail Light	2" NPTF, LT	Dimensions - 48x20x12cm Weight - 3.9kg	Plug
BNR800ML	Nozzle Dry-Break 800 Series 2" NPTF, Rail Light-Medium	2" NPTF, MED LT	Dimensions - 48x20x12cm Weight - 3.9kg	Plug

1000 Series Nozzle

Our 1000 Series refuelling nozzles allow your equipment filling speeds to be maximised.

Considered to be the pinnacle in Dry Break, automatic shut-off hardware, these durable nozzles allow fuelling process times to be reduced, enabling significant productivity gains.

Flow rates up to 1,000 litres per minute per Nozzle.



Part Number	Product Description	Tech Specs	Shipping Specs	Items Included
BAMS6	Nozzle Dry-Break 1000 Series Bulk Fill 2" NPTF	2" NPTF	Weight - 2.55kg	Plug
BN1000H	Nozzle Dry-Break 1000 Series 2" NPTF, Heavy	2" NPTF, HVY	Dimensions - 48x20x12cm Weight - 4.22kg	Plug
BN1000M	Nozzle Dry-Break 1000 Series 2" NPTF, Medium	2" NPTF, MED	Dimensions - 48x20x12cm Weight - 4.22kg	Plug
BN1000MH	Nozzle Dry-Break 1000 Series 2" NPTF, Medium-Heavy	2" NPTF, MED HVY	Dimensions - 48x20x12cm Weight - 4.22kg	Plug
BN1000ML	Nozzle Dry-Break 1000 Series 2" NPTF, Light-Medium	2" NPTF, MED LT	Dimensions - 48x20x12cm Weight - 4.22kg	Plug
BN1000XH	Nozzle Dry-Break 1000 Series 2" NPTF, Extra Heavy	2" NPTF, XHVVY	Dimensions - 48x20x12cm Weight - 4.22kg	Plug

Refuelling | Dry Break Nozzles

Underground Nozzle

Specifically-designed for underground refuelling of diesel-powered machines, the Underground Nozzle is Dry Break, offers improved dispensing rates, and is manufactured without aluminium, for use in coal mines.

Our Underground Nozzle prevents water, mud, and dust from entering fuel tanks, thus reducing engine failures. It supports flow rates of up to 300lpm.

The Underground Nozzle can be configured on site, with variable shutoff pressure settings.



Part Number	Product Description	Tech Specs	Items Included	Compatible products
AUS45	Nozzle Dry-Break 300LPM 1-1/2" NPTF, Underground	1-1/2" NPTF	Plug	AUS46 Receiver

Refuelling

Dry Break Receivers

Banlaw Dry Break Receivers deliver industry leading performance, safety & durability.

We offer a variety of Dry Break receiver configurations to suit various applications, including our 23 series which is compatible with refuelling nozzles supplied by other OEM's.

Our receivers are manufactured from the highest quality materials, including stainless steel, to ensure they withstand harsh everyday treatment. This makes them less-prone to snapping-off or leaking than receivers made from softer materials.

Go to

[800 Series Receiver](#)

[1000 Series Receiver](#)

[Underground Receiver](#)

[Check Valve Receiver](#)



800 Series Receiver



Part Number	Product Description	Tech Specs	Shipping Specs	Items Included	Compatible products
AUS23KB	Receiver Dry-Break 800 Series 2" NPTM, Hydraulic Medium	2" NPTM, MED	Dimensions - 15x7x7cm Weight - 1.14kg	Cap	BNH800 Series Nozzle
AUS23KR	Receiver Dry-Break 800 Series 2" NPTM, Rail Medium	2" NPTM, MED	Dimensions - 15x7x7cm Weight - 1.14kg	Cap	BNR800 Series Nozzle
AUS23KRL	Receiver Dry-Break 800 Series 2" NPTM, Rail Light	2" NPTM, LT	Dimensions - 15x7x7cm Weight - 1.14kg	Cap	BNR800 Series Nozzle
BRM23K	Receiver Dry-Break 800 Series 2" NPTM, Mining Medium	2" NPTM, MED	Dimensions - 15x7x7cm Weight - 1.25kg	Cap	BNM800 Series Nozzle
BRM23K-CT	Receiver Dry-Break 800 Series 2" NPTM, Mining Medium - Cold Temp	2" NPTM, MED, CT	Dimensions - 15x7x7cm Weight - 1.25kg	Cap	BNM800 Series Nozzle
BRM23KH	Receiver Dry-Break 800 Series 2" NPTM, Mining Heavy	2" NPTM, HVY	Dimensions - 15x7x7cm Weight - 1.25kg	Cap	BNM800 Series Nozzle
BRM23KL	Receiver Dry-Break 800 Series 2" NPTM, Mining Light	2" NPTM, LT	Dimensions - 15x7x7cm Weight - 1.25kg	Cap	BNM800 Series Nozzle
BRM23KMH	Receiver Dry-Break 800 Series 2" NPTM, Mining Medium-Heavy	2" NPTM, MED HVY	Dimensions - 15x7x7cm Weight - 1.25kg	Cap	BNM800 Series Nozzle

1000 Series Receiver



Part Number	Product Description	Tech Specs	Shipping Specs	Items Included
BRM43K	Receiver Dry-Break 1000 Series 2" NPTM, Medium	2" NPTM, MED	Dimensions - 15x7x7cm Weight - 1.25kg	Cap
BRM43KH	Receiver Dry-Break 1000 Series 2" NPTM, Heavy	2" NPTM, HVY	Dimensions - 15x7x7cm Weight - 1.25kg	Cap
BRM43KL	Receiver Dry-Break 1000 Series 2" NPTM, Light	2" NPTM, LT	Dimensions - 15x7x7cm Weight - 1.25kg	Cap
BRM43KMH	Receiver Dry-Break 1000 Series 2" NPTM, Medium-Heavy	2" NPTM, MED HVY	Dimensions - 15x7x7cm Weight - 1.25kg	Cap

Underground Receiver



Part Number	Product Description	Tech Specs	Items Included	Compatible products
AUS46K	Receiver Dry-Break 1-1/2" NPTM, Underground Medium	1-1/2" NPTM	Cap	AUS45 Underground Nozzle

Refuelling | Dry Break Receivers

Check Valve Receiver

Our Check Valve Receiver integrates fuel security along with Dry Break functionality.

It prevents unwanted fuel drainage from the tank which stops theft, and allows for the receiver front-end to be replaced without having to drain the tank first. This saves time on scheduled maintenance, and money because only the worn part is replaced.



Part Number	Product Description	Tech Specs	Shipping Specs	Items Included	Compatible products
BCVR23KR2	Check Valve Receiver Dry-Break 800 Series 2" NPTM, Mining Medium	2" NPTM, MED	Dimensions - 23x7x7cm Weight - 1.61kg	Cap	BNM800 Series Nozzle

Refuelling | Shells

Shells

Banlaw Receiver Shells allow for Dry Break receivers to be recessed into the fuel tank.

This prevents receiver damage from impact, avoiding associated costs and environmental concerns.

Our range of Receiver Shells are compatible with all Banlaw receiver sizes and other OEM receivers as well.



Go to

[Bolt Mount Shell](#)

[Weld Mount Shell](#)



Bolt Mount Shell

Part Number	Product Description	Tech Specs	Shipping Specs
AUS24B	Receiver Shell Assembly Bolt Mount, Mining Medium	BOLT	
AUS24B007	Receiver Shell Bolt Mount 2" NPTF	BOLT	Weight - 1.01kg
AUS24D	Receiver Shell Assembly Bolt Mount, Mining Medium	BOLT	
AUS24D007	Receiver Shell Bolt Mount 2" NPTFF	BOLT	
AUS24F007	Receiver Shell Bolt Mount 2" NPTFF, Mining	BOLT	

Weld Mount Shell

Part Number	Product Description	Tech Specs	Shipping Specs	Compatible Products
AUS24A	Receiver Shell Weld Mount, Mining Medium	WELD		
AUS24A007	Receiver Shell Weld Mount 2" NPTF	WELD	Weight - 1.01kg	
AUS24C	Receiver Shell Weld Mount, Mining Medium	WELD		
AUS24C007	Receiver Shell Weld Mount 2" NPTFF	WELD		
AUS24E007	Receiver Shell Weld Mount 2.5" JICM, Mining	WELD		
AUS24R	Receiver Shell Weld Mount, Rail Medium	WELD		
AUS46Shell	Receiver Shell Weld Mount 1-1/2" NPTF, Underground	WELD		AUS46 Receiver

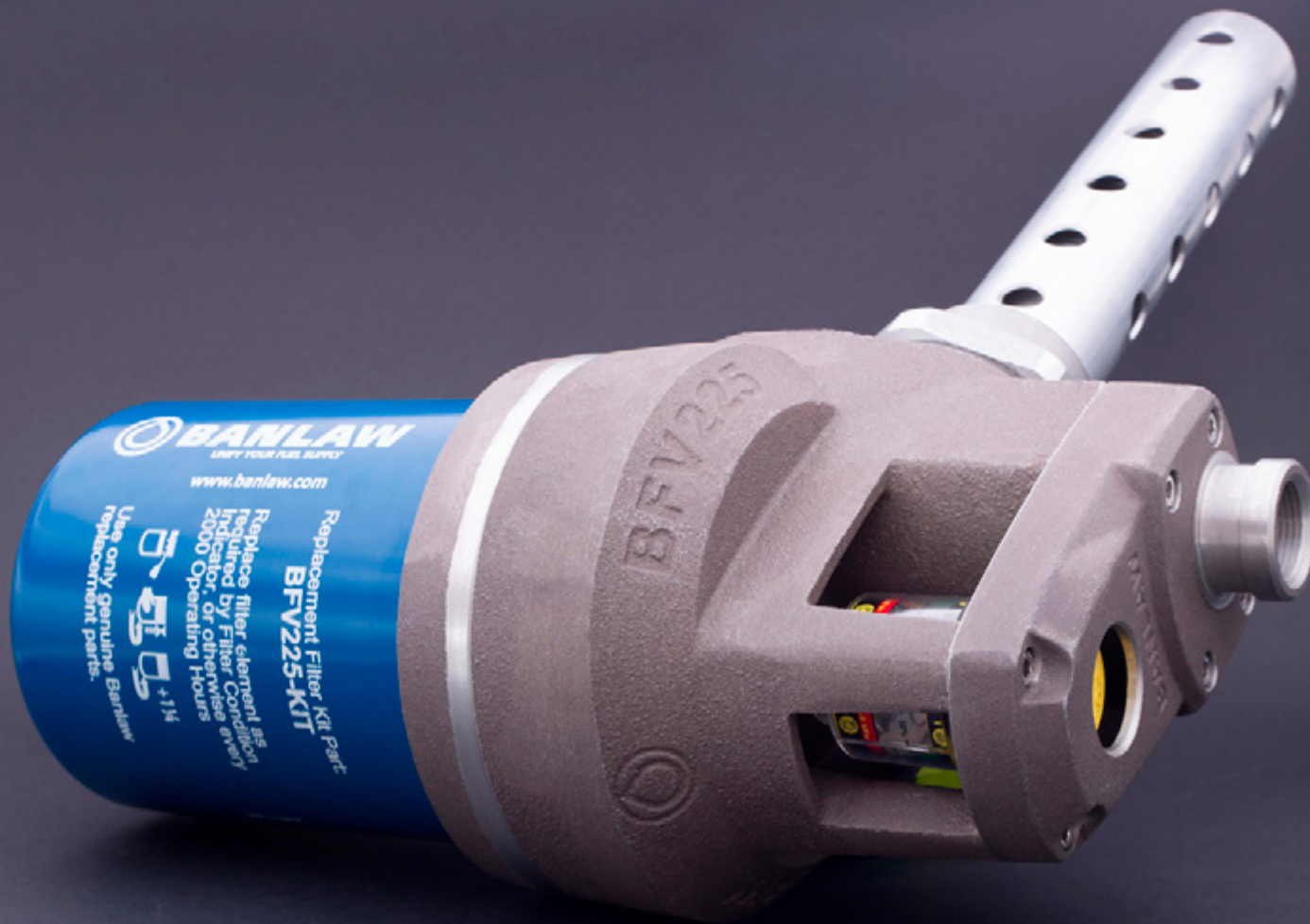
Refuelling

Vents

All Banlaw filtered and unfiltered tank vents include a float valve shutoff for automatic refuelling shut-off systems.

They are designed to allow air to be released from the fuel tank rapidly during high-speed refuelling processes, whilst avoiding premature nozzle shut-off, along with fuel spills and sprays.

Banlaw vents are available in unfiltered, filtered, and ultra-fine filtered variants.



Go to

Unfiltered

Unfiltered - Low Profile

Filtered 10µm

Fine Filtered 3µm

Unfiltered



Part Number	Product Description	Tech Specs	Shipping Specs	Compatible Products
AUS25A	Standard Vent Unfiltered 2" NPTM, 16psi	2" NPTM, 16PSI	Dimensions - 34x11x8cm Weight - 1.1kg	2"NPT Half Coupling AUS25AA-1
AUS25A-A	Standard Vent Unfiltered 2" NPTM, 16psi, w/ Coupling	2" NPTM, 16PSI		
AUS25A-A-L	Light Vent Unfiltered 2" NPTM, 7psi, w/ Coupling	2" NPTM, 7PSI		
AUS25A-C	Standard Vent Unfiltered 2" NPTM, 16psi, w/ Hose Barb DN20	2" NPTM, 16PSI		2"NPT Half Coupling AUS25AA-1
AUS25A-C-L	Light Vent Unfiltered 2" NPTM, 7psi, w/ Hose Barb DN20	2" NPTM, 7PSI		2"NPT Half Coupling AUS25AA-1
AUS25A-CN	Standard Vent Unfiltered 2" NPTM, 16psi, w/ NPTM Nipple DN20	2" NPTM, 16PSI		2"NPT Half Coupling AUS25AA-1
AUS25A-L	Light Vent Unfiltered 2" NPTM, 7psi	2" NPTM, 7PSI	Weight - 1.03kg	2"NPT Half Coupling AUS25AA-1
AUS25B	Standard Vent Unfiltered Caterpillar Flange, 16psi	2" NPTM, 16PSI		2"NPT Half Coupling AUS25AA-1
AUS25B-C	Standard Vent Unfiltered Caterpillar Flange, 16psi, w/ Hose Barb DN20	2" NPTM, 16PSI		2"NPT Half Coupling AUS25AA-1
AUS25B-C-L	Light Vent Unfiltered Caterpillar Flange, 7psi, w/ Hose Barb DN20	2" NPTM, 7PSI		2"NPT Half Coupling AUS25AA-1
AUS25B-L	Light Vent Unfiltered Caterpillar Flange, 7psi	2" NPTM, 7PSI		2"NPT Half Coupling AUS25AA-1
AUS25C	Standard Vent Unfiltered 2" NPTM, 16psi, Extended	2" NPTM, 16PSI	Dimensions - 44x11x8cm Weight - 1.19kg	2"NPT Half Coupling AUS25AA-1
AUS25C-A	Standard Vent Unfiltered 2" NPTM, 16psi, Extended w/ Coupling	2" NPTM, 16PSI	Dimensions - 44x11x8cm Weight - 1.19kg	
AUS25C-A-L	Light Vent Unfiltered 2" NPTM, 7psi, Extended w/ Coupling	2" NPTM, 7PSI	Dimensions - 44x11x8cm Weight - 1.19kg	
AUS25C-C	Standard Vent Unfiltered 2" NPTM, 16psi, Extended, w/ Hose Barb DN20	2" NPTM, 16PSI		2"NPT Half Coupling AUS25AA-1
AUS25C-CN	Standard Vent Unfiltered 2" NPTM, 16psi, Extended w/ NPTM Nipple DN20	2" NPTM, 16PSI		2"NPT Half Coupling AUS25AA-1
AUS25C-L	Light Vent Unfiltered 2" NPTM, 7psi, Extended	2" NPTM, 7PSI	Weight - 1.21kg	2"NPT Half Coupling AUS25AA-1
AUS25D	Standard Vent Unfiltered Caterpillar Flange, 16psi, Extended	FLANGE, 16PSI		2"NPT Half Coupling AUS25AA-1
AUS25D-C	Standard Vent Unfiltered Caterpillar Flange, 16psi, Extended w/ Hose Barb DN20	FLANGE, 16PSI		2"NPT Half Coupling AUS25AA-1
AUS25R	Light Vent Unfiltered 2" NPTM, Rail 7psi	2" NPTM, 7PSI	Dimensions - 28x11x8cm Weight - 0.88kg	2"NPT Half Coupling AUS25AA-1
AUS25R-B	Light Vent Unfiltered 2" NPTM, Rail 7psi, Extended	2" NPTM, 7PSI		2"NPT Half Coupling AUS25AA-1

Unfiltered - Low Profile



Part Number	Product Description	Tech Specs	Compatible Products
AUS25E	Light Vent Steel Low Profile 2" NPTM, 7psi	2" NPTM, 7PSI	2"NPT Half Coupling AUS25AA-1
AUS25E-B	Light Vent Steel Low Profile 2" NPTM, 7psi	2" NPTM, 7PSI	2"NPT Half Coupling AUS25AA-1
AUS25E-C	Light + Extended Vent Steel Low Profile 2" NPTM, 7psi	2" NPTM, 7PSI	2"NPT Half Coupling AUS25AA-1
AUS25E-G	Light - Extended Vent Steel Low Profile 2" NPTM, Rail 7psi	2" NPTM, 7PSI	2"NPT Half Coupling AUS25AA-1
AUS25E-H	Standard Vent Steel Low Profile 2" NPTM, 16psi	2" NPTM, 16PSI	2"NPT Half Coupling AUS25AA-1
AUS25E-K	Light Vent Steel Low Profile 2" NPTM, Rail 7psi	2" NPTM, 7PSI	2"NPT Half Coupling AUS25AA-1
AUS25F	Standard + Extended Vent Steel Low Profile 2" NPTM, 16psi	2" NPTM, 16PSI	2"NPT Half Coupling AUS25AA-1

Filtered 10µm

Part Number	Product Description	Tech Specs	Shipping Specs	Compatible Products
BP125A	Standard Vent Filtered 10um 2" NPTM, 16psi	2" NPTM, 16PSI	Dimensions - 35x 14x14cm Weight - 1.5kg	2"NPT Half Coupling AUS25AA-1
BP125A-CL	Light + Hose Barb Vent Filtered 10um 2" NPTM, 7psi	2" NPTM, 7PSI	Dimensions - 35x 14x14cm Weight - 1.5kg	2"NPT Half Coupling AUS25AA-1
BP125A-L	Light Vent Filtered 10um 2" NPTM, 7psi	2" NPTM, 7PSI	Dimensions - 35x 14x14cm Weight - 1.5kg	2"NPT Half Coupling AUS25AA-1
BP125R	Light Vent Filtered 10um 2" NPTM, Rail 7psi	2" NPTM, 7PSI	Dimensions - 15x14x14cm Weight - 1.5kg	2"NPT Half Coupling AUS25AA-1

Fine Filtered 3µm

Our patented Ultra-Fine Filtered Vent (UFFV) prevents damaging airborne contaminants from entering fuel tanks and other fluid storages.

It excludes airborne particles (greater than or equal to) 3 microns, and lasts up to 2,000 machine hours because of its large filter canister, and due to the fact only incoming air is filtered.

The UFFV has been proven to significantly increase the life of fuel systems and engine components, and unlike standard tank breather systems, blocked filters cannot cause tank over-pressurisation.

A visual filter condition indicator is fitted to simplify maintenance processes.



Part Number	Product Description	Tech Specs	Shipping Specs	Compatible Products
BFV225A	Standard Vent Fine Filtered 3µm 2" NPTM, 16psi	2" NPTM, 16PSI	Dimensions - 46x37x20cm Weight - 6.04kg	2" NPT Half Coupling AUS25AA-1
BFV225A-L	Light Vent Fine Filtered 3µm 2" NPTM, 7psi	2" NPTM, 7PSI		2" NPT Half Coupling AUS25AA-1
BFV225C	Standard + Extended Vent Fine Filtered 3µm 2" NPTM, 16psi	2" NPTM, 16PSI		2" NPT Half Coupling AUS25AA-1
BFV225C-L	Light + Extended Vent Fine Filtered 3µm 2" NPTM, 7psi	2" NPTM, 7PSI		2" NPT Half Coupling AUS25AA-1

Refuelling | Swivels

Swivels

Banlaw's swivel range encompasses both Dry Break and Splash Fill refuelling applications.

Swivels are installed directly behind the nozzle to aid simplicity and ergonomics when refuelling your equipment. They also help prolong the life of other refuelling components.

We manufacture our Dry Break Swivels from steel, and also produce a lightweight anodised-aluminium version.



Go to

[Dry Break Swivel](#)

[Splash Fill Swivel](#)

Dry Break Swivel



Part Number	Product Description	Tech Specs	Shipping Specs
AUS10	Steel Dry-Break Nozzle Swivel 2" NPTM - 2" NPTF	2" NPTMF	Dimensions - 10x7x7cm Weight - 1.03kg
AUS10-CT	Steel Dry-Break Nozzle Swivel 2" NPTM - 2" NPTF, Cold Temp	2" NPTMF, CT	Dimensions - 10x7x7cm Weight - 1.03kg
AUS11	Steel Dry-Break Nozzle Swivel 2" NPTM - 1-1/2" NPTM	2" NPTM, 1-1/2" NPTM	Dimensions - 11x7x7cm Weight - 1.08kg
AUS12	Steel Dry-Break Nozzle Swivel 2" NPTMM	2" NPTMM	Dimensions - 11x7x7cm Weight - 1.13kg
AUS50	Aluminium Dry-Break Nozzle Swivel 2" NPTM - 2" NPTF	2" NPTMF	
AUS52	Aluminium Dry-Break Nozzle Swivel 2" NPTM - 1-1/2" NPTF	2" NPTM, 1-1/2" NPTF	Dimensions - 10x7x7cm Weight - 0.54kg
AUS53	Aluminium Dry-Break Nozzle Swivel 2" NPTM - 1-7/8" JICM	2" NPTM, 1-7/8" JICM	Dimensions - 10x7x7cm Weight - 0.54kg
AUS54	Aluminium Dry-Break Nozzle Swivel 2" NPTM - 1-5/8" JICM	2" NPTM, 1-5/8" JICM	Dimensions - 14x8x8cm Weight - 0.64kg
AUS55	Aluminium Dry-Break Nozzle Swivel 2" NPTM - 2-1/2" JICM	2" NPTM, 2-1/2" JICM	Dimensions - 14x8x8cm Weight - 0.64kg
AUS7	Steel Dry-Break Nozzle Swivel 2" NPTM - 1-1/4" NPTF	2" NPTM, 1-1/4" NPTF	Dimensions - 10x6x6cm Weight - 0.95kg
AUS8	Steel Dry-Break Nozzle Swivel 1-1/2" NPTM - 1-1/2" NPTF	2" NPTM, 1-1/2" NPTF	Dimensions - 10x7x7cm Weight - 1.01kg
AUS9	Steel Dry-Break Nozzle Swivel 2" NPTM - 1-1/2" NPTF	2" NPTM, 1-1/2" NPTF	Dimensions - 10x7x7cm Weight - 1.03kg
AUS9-CT	Steel Dry-Break Nozzle Swivel 2" NPTM - 1-1/2" NPTF, Cold Temp	2" NPTM, 1-1/2" NPTF, CT	Dimensions - 10x7x7cm Weight - 1.1kg

Splash Fill Swivel

Part Number	Product Description	Tech Specs	Shipping Specs
BFTSW104	Dual Plane Splash Fill Swivel 3/4" NPTMF	3/4" NPTMF	
BFTSW106	Dual Plane Splash Fill Swivel 1" NPTMF	1" NPTF	Dimensions - 13x6x6cm Weight - 1.36kg

Break Away Valves

Banlaw's Break Away Valves are designed to fracture when a specific amount of lateral stress is applied.

This means that should a vehicle drive-away during refuelling, the valve assembly will separate into two Dry Break components. These Dry Break components will prevent fuel from spilling from either the delivery line, or the hose which is still connected to the vehicle.



Part Number	Product Description	Tech Specs	Shipping Specs
AUS4W-50	Break Away Valve 2" BSPTMM	2" BSPF	Dimensions - 29x11x11cm Weight - 3kg
AUS4W-50N	Break Away Valve 2" NPTMM	2" NPTM	Dimensions - 29x11x11cm Weight - 3kg
AUS4W-75	Break Away Valve 3" BSPTMM	3" BSPTM	Weight - 5.5kg
AUS4W-75N	Break Away Valve 3" NPTMM	3" NPTM	Weight - 5.5kg
BFT4W029	Break Away Valve Adaptor 3" BSPF - 2.5" JICM	3" BSPF, 2-1/2" JICM	
BFT4W030	Break Away Valve Adaptor 2" BSPF - 2-1/2" JICM	2" BSPF, 2-1/2" JICM	
BFT4W031	Break Away Valve Adaptor 3" NPTF - 2-1/2" JICM	3" NPTF, 2-1/2" JICM	
BFT4W032	Break Away Valve Adaptor 2" NPTF - 2-1/2" JICM	2" NPTF, 2-1/2" JICM	
BFT4W033	Break Away Valve Adaptor 2" BSPF - 1-7/8" JICM	2" BSPF, 1-7/8" JICM	
BFT4W034	Break Away Valve Adaptor 2" NPTF - 1-7/8" JICM	2" NPTF, 1-7/8" JICM	



Fluid Transfer

Banlaw LubeCentral™ products are a selection of fluid transfer couplings designed for industrial environments.

They feature exceptional durability, flow rate capability, and are known for their ability to avoid liquid contamination and spillage.



Go to

[Classic](#)

[Flush Face](#)

Fluid Transfer

Classic

Banlaw's Classic range of couplings has been proven in some of the world's harshest environments for decades.

Today the classic range is still relevant, and used by many organisations that require high flow rates, cross-compatibility, and also premium manufacture quality.

A unique coupling is provided for each oil, grease or coolant type, eliminating the possibility of cross-contamination.

Go to

Coolant

Crankcase

Hydraulic

Transmission

Push-to-Connect

R Series

Grease



Coolant



Part Number	Product Description	Tech Specs	Shipping Specs	Items Included
AUS36A	Nozzle Classic Coolant 3/4" NPTM	3/4" NPTM	Dimensions - 8x6x6cm Weight - 0.4kg	Plug sold seperately
AUS36A - CT	Nozzle Classic Coolant 3/4" NPTM, Cold Temp	3/4" NPTM, CT	Dimensions - 8x6x6cm Weight - 0.4kg	Plug sold seperately
AUS36AB/H	Nozzle Bulkhead Classic Coolant 1-1/16" JICM	1-1/16" JICM	Dimensions - 9x6x6cm Weight - 0.4kg	
AUS36AB/H - CT	Nozzle Bulkhead Classic Coolant 1-1/16" JICM, Cold Temp	1-1/16" JICM, CT	Dimensions - 9x6x6cm Weight - 0.4kg	
AUS36A-P	Nozzle Plug Classic Coolant	PLUG	Dimensions - 13x6x3cm Weight - 0.03kg	
AUS37W	Receiver Classic Coolant 1/2" NPTM	1/2" NPTM	Dimensions - 5x2x2cm Weight - 0.03kg	Cap sold separately
AUS37W - CT	Receiver Classic Coolant 1/2" NPTM, Cold Temp	1/2" NPTM, CT	Dimensions - 5x2x2cm Weight - 0.03kg	Cap sold separately
AUS37WB/H	Receiver Bulkhead Classic Coolant 1-1/16" JICM	1-1/16" JICM	Dimensions - 6x2x2cm Weight - 0.08kg	Cap sold separately
AUS37WB/H - CT	Receiver Bulkhead Classic Coolant 1-1/16" JICM, Cold Temp	1-1/16" JICM, CT	Dimensions - 6x2x2cm Weight - 0.08kg	Cap sold separately
AUS37W-C	Receiver Cap Classic Coolant	CAP	Dimensions - 10x7x3cm Weight - 0.03kg	

Crankcase



Part Number	Product Description	Tech Specs	Shipping Specs	Items Included
AUS27W	Receiver Classic Crankcase 3/4" NPTM	3/4" NPTM	Dimensions - 7x5x5cm Weight - 0.25kg	Cap sold separately
AUS27W - CT	Receiver Classic Crankcase 3/4" NPTM, Cold Temp	3/4" NPTM, CT	Dimensions - 7x5x5cm Weight - 0.25kg	Cap sold separately
AUS27W-B	Receiver Classic Crankcase 1/2" NPTM	1/2" NPTM	Dimensions - 7x5x5cm Weight - 0.25kg	Cap sold separately
AUS27W-B - CT	Receiver Classic Crankcase 1/2" NPTM, Cold Temp	1/2" NPTM, CT	Dimensions - 7x5x5cm Weight - 0.25kg	Cap sold separately
AUS27WB/H	Receiver Bulkhead Classic Crankcase 1-1/16" JICM	1-1/16" JICM	Dimensions - 9x5x5cm Weight - 0.32kg	Cap sold separately
AUS27WB/H - CT	Receiver Bulkhead Classic Crankcase 1-1/16" JICM, Cold Temp	1-1/16" JICM, CT	Dimensions - 9x5x5cm Weight - 0.32kg	Cap sold separately
AUS27W-C	Receiver Cap Classic Crankcase	CAP	Dimensions - 13x7x7cm Weight - 0.05kg	
AUS29L	Nozzle Classic Crankcase 3/4" NPTM	3/4" NPTM	Dimensions - 8x6x6cm Weight - 0.5kg	Plug sold separately
AUS29L - CT	Nozzle Classic Crankcase 3/4" NPTM, Cold Temp	3/4" NPTM, CT	Dimensions - 8x6x6cm Weight - 0.5kg	Plug sold separately
AUS29LB/H	Nozzle Bulkhead Classic Crankcase 1-1/16" JICM	1-1/16" JICM	Dimensions - 9X6X6cm Weight - 0.5kg	
AUS29LB/H - CT	Nozzle Bulkhead Classic Crankcase 1-1/16" JICM, Cold Temp	1-1/16" JICM, CT	Dimensions - 9X6X6cm Weight - 0.5kg	
AUS29W	Nozzle Classic Crankcase 3/4" NPTM	3/4" NPTM	Dimensions - 8x5x5cm Weight - 0.5kg	Plug sold separately
AUS29W - CT	Nozzle Classic Crankcase 3/4" NPTM, Cold Temp	3/4" NPTM, CT	Dimensions - 8x5x5cm Weight - 0.5kg	Plug sold separately
AUS29W-B	Nozzle Classic Crankcase 1/2" NPTM	1/2" NPTM	Dimensions - 8x5x5cm Weight - 0.5kg	Plug sold separately
AUS29W-B - CT	Nozzle Classic Crankcase 1/2" NPTM, Cold Temp	1/2" NPTM, CT	Dimensions - 8x5x5cm Weight - 0.5kg	Plug sold separately
AUS29WB/H	Nozzle Bulkhead Classic Crankcase 1-1/16" JICM	1-1/16" JICM	Dimensions - 9x5x5cm Weight - 0.5kg	
AUS29WB/H - CT	Nozzle Bulkhead Classic Crankcase 1-1/16" JICM, Cold Temp	1-1/16" JICM, CT	Dimensions - 9x5x5cm Weight - 0.5kg	
AUS29W-P	Nozzle Plug Classic Crankcase	PLUG	Dimensions - 9x5x5cm Weight - 0.05kg	



Part Number	Product Description	Tech Specs	Shipping Specs	Items Included
AUS34A	Nozzle Classic Hydraulic 3/4" NPTM	3/4" NPTM	Dimensions - 10x6x6cm Weight - 0.7kg	Plug sold seperately
AUS34A - CT	Nozzle Classic Hydraulic 3/4" NPTM, Cold Temp	3/4" NPTM, CT	Dimensions - 10x6x6cm Weight - 0.7kg	Plug sold seperately
AUS34AB/H	Nozzle Bulkhead Classic Hydraulic 1-1/16" JICM	1-1/16" JICM	Dimensions - 11x6x6cm Weight - 0.7kg	
AUS34AB/H - CT	Nozzle Bulkhead Classic Hydraulic 1-1/16" JICM, Cold Temp	1-1/16" JICM, CT	Dimensions - 11x6x6cm Weight - 0.7kg	
AUS34A-P	Nozzle Plug Classic Hydraulic	PLUG	Dimensions - 7x10x3cm Weight - 0.05kg	
AUS41A	Receiver Classic Hydraulic 3/4" NPTM	3/4" NPTM	Dimensions - 8x5x5cm Weight - 0.3kg	Cap sold separately
AUS41A - CT	Receiver Classic Hydraulic 3/4" NPTM, Cold Temp	3/4" NPTM, CT	Dimensions - 8x5x5cm Weight - 0.3kg	Cap sold separately
AUS41AB/H	Receiver Bulkhead Classic Hydraulic 1-1/16" JICM	1-1/16" JICM	Dimensions - 9x5x5cm Weight - 0.4kg	Cap sold separately
AUS41AB/H - CT	Receiver Bulkhead Classic Hydraulic 1-1/16" JICM, Cold Temp	1-1/16" JICM, CT	Dimensions - 9x5x5cm Weight - 0.4kg	Cap sold separately
AUS41A-C	Receiver Cap Classic Hydraulic	CAP	Dimensions - 10x5x4cm Weight - 0.03kg	

Transmission



Part Number	Product Description	Tech Specs	Shipping Specs	Items Included
AUS32W	Nozzle Classic Transmission 3/4" NPTM	3/4" NPTM	Dimensions - 7x5x5cm Weight - 0.4kg	Plug sold seperately
AUS32W - CT	Nozzle Classic Transmission 3/4" NPTM, Cold Temp	3/4" NPTM, CT	Dimensions - 7x5x5cm Weight - 0.4kg	Plug sold seperately
AUS32WB/H	Nozzle Bulkhead Classic Transmission 1-1/16" JICM	1-1/16" JICM	Dimensions - 8x5x5cm Weight - 0.4kg	Plug sold seperately
AUS32WB/H - CT	Nozzle Bulkhead Classic Transmission 1-1/16" JICM, Cold Temp	1-1/16" JICM, CT	Dimensions - 8x5x5cm Weight - 0.4kg	Plug sold seperately
AUS32W-P	Nozzle Plug Classic Transmission	PLUG	Dimensions - 10x6x1cm Weight - 0.02kg	
AUS33W	Receiver Classic Transmission 1/2" NPTM	1/2" NPTM	Dimensions - 10x7x3cm Weight - 0.05kg	Cap sold seperately
AUS33W -CT	Receiver Classic Transmission 1/2" NPTM, Cold Temp	1/2" NPTM, CT	Dimensions - 10x7x3cm Weight - 0.05kg	Cap sold seperately
AUS33WB/H	Receiver Bulkhead Classic Transmission 1-1/16" JICM	1-1/16" JICM	Dimensions - 11x7x3cm Weight - 0.25kg	Cap sold seperately
AUS33WB/H -CT	Receiver Bulkhead Classic Transmission 1-1/16" JICM, Cold Temp	1-1/16" JICM, CT	Dimensions - 11x7x3cm Weight - 0.25kg	Cap sold seperately
AUS33W-C	Receiver Cap Classic Transmission	CAP	Dimensions - 10x7x3cm Weight - 0.05kg	

Push-to-Connect



Part Number	Product Description	Tech Specs	Shipping Specs	Items Included
AUS38B/H	Receiver Bulkhead Classic Push-to-Connect 1-1/16" JICM	1-1/16" JICM	Dimensions - 9x5x5cm Weight - 0.3kg	Cap sold separately
AUS38B/H - CT	Receiver Bulkhead Classic Push-to-Connect 1-1/16" JICM, Cold Temp	1-1/16" JICM, CT	Dimensions - 9x5x5cm Weight - 0.3kg	Cap sold separately
AUS38W	Receiver Classic Push-to-Connect 3/4" NPTM	3/4" NPTM	Dimensions - 8x5x5cm Weight - 0.3kg	Cap sold separately
AUS38W - CT	Receiver Classic Push-to-Connect 3/4" NPTM, Cold Temp	3/4" NPTM, CT	Dimensions - 8x5x5cm Weight - 0.3kg	Cap sold separately
AUS38W-C	Receiver Cap Classic Push-to-Connect	CAP	Dimensions - 10x7x4cm Weight - 0.04kg	
AUS39W	Nozzle Classic Push-to-Connect 3/4" NPTM	3/4" NPTM	Dimensions - 9x5x5cm Weight - 0.6kg	Plug sold seperately
AUS39W - CT	Nozzle Classic Push-to-Connect 3/4" NPTM, Cold Temp	3/4" NPTM, CT	Dimensions - 9x5x5cm Weight - 0.6kg	Plug sold seperately
AUS39WB/H	Nozzle Bulkhead Classic Push-to-Connect 1-1/16" JICM	1-1/16" JICM	Dimensions - 10x5x5cm Weight - 0.6kg	Plug sold seperately
AUS39WB/H - CT	Nozzle Bulkhead Classic Push-to-Connect 1-1/16" JICM, Cold Temp	1-1/16" JICM, CT	Dimensions - 10x5x5cm Weight - 0.6kg	Plug sold seperately

R Series

Part Number	Product Description	Tech Specs	Shipping Specs	Items Included
AUS80A	Receiver Classic R Series R18	1.875-12UN-2A, 1.625-12UN-2B	Dimensions - 10x6x6cm Weight - 0.36kg	Cap sold separately
AUS80A-C	Receiver Cap Classic R Series R18	CAP	Dimensions - 10x5x5cm Weight - 0.06kg	
AUS81A	Nozzle Classic R Series R17 1" NPTF	1" NPTF	Weight - 0.8kg	Plug sold seperately
AUS81A-P	Nozzle Plug Classic R Series R18	PLUG	Dimensions - 8x6x3cm Weight - 0.05kg	

Grease



Part Number	Product Description	Tech Specs	Shipping Specs	Items Included
AUSGN	Nozzle Classic Grease 3/4" NPTF	3/4" NPTF	Dimensions - 6x5x5cm Weight - 0.49kg	Plug sold seperately
AUSGNP	Nozzle Plug Classic Grease	PLUG	Weight - 0.04kg	
AUSGR	Receiver Classic Grease 3/4" NPTM	3/4" NPTM	Dimensions - 8x6x6cm Weight - 0.24kg	Cap sold separately
AUSGRB	Receiver Classic Grease 1/2" NPTM	1/2" NPTM	Dimensions - 7x5x5cm Weight - 0.22kg	Cap sold separately
AUSGRB/H	Receiver Bulkhead Classic Grease 1-1/16" JICM	1-1/6" JICM	Dimensions - 8x5x5cm Weight - 0.4kg	Cap sold separately
AUSGRC	Receiver Cap Classic Grease	CAP	Dimensions - 10x7x5cm Weight - 0.05kg	
AUSGRN	Receiver Classic Grease	3/8" NPTM	Dimensions - 6x5x5cm Weight - 0.21kg	Cap sold separately

Flush Face

Our Flush Face range of couplings is designed to fill and evacuate a wide range of fluids with maximum efficiency.

They contain a superior 'ball-lock' latching system for a stronger lock connection, Dry Break design for reduced spills, and are Flush Faced to minimise the particulate contaminants which make it into the fluid path.

Each set of couplings are colour coded to assist the operator in identifying matched fittings, and only same-coloured nozzles and receivers can connect, eliminating fluid cross-contamination.

Sound engineering design focused on the internal fluid path mean the Banlaw Flush Face Range of couplings have a higher flow capability, and allow for more efficient service intervals.

Go to

[Evacuation](#)

[Bulk Fluid Transfer](#)

[Grease Transfer](#)

[Size 0](#)

[Size 1](#)

[Size 2](#)

[Size 3](#)

[Size 4](#)

[Size 5](#)

[Size 6](#)

[Size 7](#)

[Size 8](#)

[Size 9](#)

[Size 10](#)

[Size 11](#)



Fluid Transfer | Flush Face

Evacuation

Banlaw Evacuation Couplings reduce machine servicing times by using a vacuum to remove waste fluids, rather than gravity.

Using just one coupling, service teams can connect to all the Banlaw Flush Face Receivers from size 1 to size 11.

Banlaw Evacuation Couplings feature a fluid-tight connection which prevents spills during fluid removal, as well as a check valve to ensure waste products cannot be pumped back into your machines.



Part Number	Product Description	Tech Specs	Shipping Specs	Items Included
BEC-B	Banlaw Evacuation Coupling Non-Valved 1" NPTF	1" NPTF	Dimensions - 15x7x7cm Weight - 1.67kg	Plug

Bulk Fluid Transfer

Our Bulk Fluid Transfer Coupling is designed for the bi-directional transfer of diesel at up to 500lpm.

Originally designed for in-line refuelling during long haul rail trips, the coupling will not leak under load and vibration.

It includes a positive twist-lock mechanism, so that when it's correctly connected, it stays connected.

The Bulk Fluid Transfer Coupling can be connected and disconnected under residual line pressure.



Part Number	Product Description	Tech Specs	Shipping Specs	Items Included
BNC40	Nozzle Bulk Transfer 1-1/2" NPTF	1-1/2" NPTF	Dimensions - 17x10x10cm Weight - 2.3kg	Nozzle and Plug
BRC40	Receiver Dry-Break Bulk Transfer 1-1/2" NPTM	1-1/2" NPTM	Dimensions - 14x7x7cm Weight - 1.35kg	Receiver and Cap

Grease Transfer

The Banlaw Grease Transfer Coupling is safe, fast, and easy-to-use.

Flush-faced design and a positive-connect feel mitigate the risk of common grease-related injuries.

The GTX also offers superior grease transfer rates when compared with competitor products.



Part Number	Product Description	Tech Specs	Shipping Specs	Items Included
GTXNB	Nozzle Flush Face Grease 3/4" NPTF	3/4" NPTF, CT	Dimensions - 12x7x7cm Weight - 1.2kg	(blank)
GTXNB - CT	Nozzle Flush Face Grease 3/4" NPTF, Cold Temp	3/4" NPTF, CT	Dimensions - 12x7x7cm Weight - 1.2kg	(blank)
GTXNC	Nozzle Flush Face Grease 1" NPTF	1" NPTF, CT	Dimensions - 12x7x7cm Weight - 1.2kg	(blank)
GTXNC - CT	Nozzle Flush Face Grease 1" NPTF, Cold Temp	1" NPTF, CT	Dimensions - 12x7x7cm Weight - 1.2kg	(blank)
GTXRA	Receiver Flush Face Grease 1/2" NPTM	1/2" NPTM	Dimensions - 10x6x6cm Weight - 0.6kg	Receiver and Cap
GTXRA - CT	Receiver Flush Face Grease 1/2" NPTM, Cold Temp	1/2" NPTM, CT	Dimensions - 10x6x6cm Weight - 0.6kg	Receiver and Cap
GTXRB	Receiver Flush Face Grease 3/4" NPTM	3/4" NPTM	Dimensions - 10x6x6cm Weight - 0.6kg	Receiver and Cap
GTXRB - CT	Receiver Flush Face Grease 3/4" NPTM, Cold Temp	3/4" NPTM, CT	Dimensions - 10x6x6cm Weight - 0.6kg	Receiver and Cap
GTXRBO	Receiver Flush Face Grease 3/4" UNOM	3/4" UNOM	Dimensions - 10x6x6cm Weight - 0.6kg	Receiver and Cap
GTXRBO - CT	Receiver Flush Face Grease 3/4" UNOM, Cold Temp	3/4" UNOM, CT	Dimensions - 10x6x6cm Weight - 0.6kg	Receiver and Cap
GTXRC	Receiver Flush Face Grease 1" NPTM	1" NPTM	Dimensions - 10x6x6cm Weight - 0.6kg	Receiver and Cap
GTXRC - CT	Receiver Flush Face Grease 1" NPTM, Cold Temp	1" NPTM, CT	Dimensions - 10x6x6cm Weight - 0.6kg	Receiver and Cap

Size 0

The smallest in our flush face range, the Size 0 is perfect for general fluid transfer; but also dosing, withdrawing product samples for analysis, and as a pressure tap for pipeline analysis.

100% stainless steel construction ensures the receiver is not prone to corrosion, and will operate as designed even after significant periods without use.



Part Number	Product Description	Tech Specs	Shipping Specs	Items Included
BPLN0	Nozzle Flush Face Size 0, 1/4" BSPF	1/4" BSPF	Dimensions - 6x4x4cm Weight - 0.25kg	Cap sold separately
BPLR0	Receiver Flush Face Size 0, 1/4" BSPM	1/4" BSPM	Weight - 0.08kg	Cap not included

Size 1

Part Number	Product Description	Tech Specs	Shipping Specs	Items Included
BPLN1BN - CT	Nozzle Flush Face Size 01, 3/4" NPTF, Cold Temp	3/4" NPTF, CT	Dimensions - 9x5x5cm Weight - 0.84kg	Cap sold separately
BPLN1BNC - CT	Nozzle Flush Face Size 01, 3/4" NPTF, Cold Temp	3/4" NPTF, CT	Dimensions - 9x6x6cm Weight - 0.56kg	Nozzle inc Cap
BPLN1CN	Nozzle Flush Face Size 01, 1" NPTF	1" NPTF	Dimensions - 7x5x5cm Weight - 0.45kg	Cap sold separately
BPLN1CN - CT	Nozzle Flush Face Size 01, 1" NPTF, Cold Temp	1" NPTF, CT	Dimensions - 9x5x5cm Weight - 0.84kg	Cap sold separately
BPLN1CNC	Nozzle Flush Face Size 01, 1" NPTF	1" NPTF	Dimensions - 9x6x6cm Weight - 0.56kg	Nozzle inc Cap
BPLN1CNC - CT	Nozzle Flush Face Size 01, 1" NPTF, Cold Temp	1" NPTF, CT	Dimensions - 9x6x6cm Weight - 0.56kg	Nozzle inc Cap
BPLR1AE	Receiver Flush Face Size 01, 1/2" NPTM	1/2" NPTM	Dimensions - 10x6x6cm Weight - 0.7kg	Receiver and Cap
BPLR1AE - CT	Receiver Flush Face Size 01, 1/2" NPTM, Cold Temp	1/2" NPTM, CT	Dimensions - 11x6x6cm Weight - 0.53kg	Receiver and Cap
BPLR1AN	Receiver Non-Evac Flush Face Size 01, 1/2" NPTM	1/2" NPTM	Dimensions - 11x6x6cm Weight - 0.25kg	Cap sold separately
BPLR1BE	Receiver Flush Face Size 01, 3/4" NPTM	3/4" NPTM	Dimensions - 11x6x6cm Weight - 0.72kg	Receiver and Cap
BPLR1BE - CT	Receiver Flush Face Size 01, 3/4" NPTM, Cold Temp	3/4" NPTM, CT	Dimensions - 11x6x6cm Weight - 0.53kg	Receiver and Cap
BPLR1BN	Receiver Non-Evac Flush Face Size 01, 3/4" NPTM	3/4" NPTM	Dimensions - 7x5x5cm Weight - 0.26kg	Cap sold separately

Size 2



Part Number	Product Description	Tech Specs	Shipping Specs	Items Included
BPLN2BN	Nozzle Flush Face Size 02, 3/4" NPTF	3/4" NPTF	Dimensions - 7x5x5cm Weight - 0.41kg	Cap sold separately
BPLN2BN - CT	Nozzle Flush Face Size 02, 3/4" NPTF, Cold Temp	3/4" NPTF, CT	Dimensions - 9x5x5cm Weight - 0.84kg	Cap sold separately
BPLN2BNC	Nozzle inc Cap Flush Face Size 02, 3/4" NPTF	3/4" NPTF	Dimensions - 10x6x6cm Weight - 0.41kg	Cap sold separately
BPLN2BNC - CT	Nozzle Flush Face Size 02, 3/4" NPTF, Cold Temp	3/4" NPTF, CT	Dimensions - 9x6x6cm Weight - 0.56kg	Nozzle inc Cap
BPLN2CN	Nozzle Flush Face Size 02, 1" NPTF	1" NPTF	Dimensions - 6x5x5cm Weight - 0.4kg	Cap sold separately
BPLN2CN - CT	Nozzle Flush Face Size 02, 1" NPTF, Cold Temp	1" NPTF, CT	Dimensions - 9x5x5cm Weight - 0.84kg	Cap sold separately
BPLN2CNC	Nozzle Flush Face Size 02, 1" NPTF	1" NPTF	Dimensions - 9x6x6cm Weight - 0.56kg	Nozzle inc Cap
BPLN2CNC - CT	Nozzle Flush Face Size 02, 1" NPTF, Cold Temp	1" NPTF, CT	Dimensions - 9x6x6cm Weight - 0.56kg	Nozzle inc Cap
BPLR2BE	Receiver Flush Face Size 02, 3/4" NPTM	3/4" NPTM	Dimensions - 10x6x6cm Weight - 0.43kg	Receiver and Cap
BPLR2BE - CT	Receiver Flush Face Size 02, 3/4" NPTM, Cold Temp	3/4" NPTM, CT	Dimensions - 11x6x6cm Weight - 0.53kg	Receiver and Cap
BPLR2CE	Receiver Flush Face Size 02, 1" NPTM	1" NPTM	Dimensions - 10x6x6cm Weight - 0.43kg	Receiver and Cap
BPLR2CE - CT	Receiver Flush Face Size 02, 1" NPTM, Cold Temp	1" NPTM, CT	Dimensions - 11x6x6cm Weight - 0.53kg	Receiver and Cap

Size 3



Part Number	Product Description	Tech Specs	Shipping Specs	Items Included
BPLN3BN	Nozzle Flush Face Size 03, 3/4" NPTF	3/4" NPTF	Dimensions - 7x5x5cm Weight - 0.48kg	Cap sold separately
BPLN3BN - CT	Nozzle Flush Face Size 03, 3/4" NPTF, Cold Temp	3/4" NPTF, CT	Dimensions - 9x5x5cm Weight - 0.84kg	Cap sold separately
BPLN3BNC	Nozzle Flush Face Size 03, 3/4" NPTF	3/4" NPTF	Dimensions - 9x6x6cm Weight - 0.56kg	Nozzle inc Cap
BPLN3BNC - CT	Nozzle Flush Face Size 03, 3/4" NPTF, Cold Temp	3/4" NPTF, CT	Dimensions - 9x6x6cm Weight - 0.56kg	Nozzle inc Cap
BPLN3CN	Nozzle Flush Face Size 03, 1" NPTF	1" NPTF	Dimensions - 7x5x5cm Weight - 0.47kg	Cap sold separately
BPLN3CN - CT	Nozzle Flush Face Size 03, 1" NPTF, Cold Temp	1" NPTF, CT	Dimensions - 9x5x5cm Weight - 0.84kg	Cap sold separately
BPLN3CNC	Nozzle Flush Face Size 03, 1" NPTF	1" NPTF	Dimensions - 9x6x6cm Weight - 0.56kg	Nozzle inc Cap
BPLN3CNC - CT	Nozzle Flush Face Size 03, 1" NPTF, Cold Temp	1" NPTF, CT	Dimensions - 9x6x6cm Weight - 0.56kg	Nozzle inc Cap
BPLR3BE	Receiver Flush Face Size 03, 3/4" NPTM	3/4" NPTM	Dimensions - 10x6x6cm Weight - 0.44kg	Receiver and Cap
BPLR3BE - CT	Receiver Flush Face Size 03, 3/4" NPTM, Cold Temp	3/4" NPTM, CT	Dimensions - 11x6x6cm Weight - 0.53kg	Receiver and Cap
BPLR3CE	Receiver Flush Face Size 03, 1" NPTM	1" NPTM	Dimensions - 10x6x6cm Weight - 0.44kg	Receiver and Cap
BPLR3CE - CT	Receiver Flush Face Size 03, 1" NPTM, Cold Temp	1" NPTM, CT	Dimensions - 11x6x6cm Weight - 0.53kg	Receiver and Cap

Size 4



Part Number	Product Description	Tech Specs	Shipping Specs	Items Included
BPLN4BN	Nozzle Flush Face Size 04, 3/4" NPTF	3/4" NPTF	Dimensions - 8x6x6cm Weight - 0.66kg	Cap sold separately
BPLN4BN - CT	Nozzle Flush Face Size 04, 3/4" NPTF, Cold Temp	3/4" NPTF, CT	Dimensions - 9x5x5cm Weight - 0.84kg	Cap sold separately
BPLN4BNC	Nozzle Flush Face Size 04, 3/4" NPTF	3/4" NPTF	Dimensions - 10x6x6cm Weight - 0.71kg	Nozzle inc Cap
BPLN4BNC - CT	Nozzle Flush Face Size 04, 3/4" NPTF, Cold Temp	3/4" NPTF, CT	Dimensions - 10x6x6cm Weight - 0.71kg	Nozzle inc Cap
BPLN4CN	Nozzle Flush Face Size 04, 1" NPTF	1" NPTF	Dimensions - 10x7x3cm Weight - 0.07kg	Cap sold separately
BPLN4CN - CT	Nozzle Flush Face Size 04, 1" NPTF, Cold Temp	1" NPTF, CT	Dimensions - 9x5x5cm Weight - 0.84kg	Cap sold separately
BPLN4CNC	Nozzle Flush Face Size 04, 1" NPTF	1" NPTF	Dimensions - 10x6x6cm Weight - 0.71kg	Nozzle inc Cap
BPLN4CNC - CT	Nozzle Flush Face Size 04, 1" NPTF, Cold Temp	1" NPTF, CT	Dimensions - 10x6x6cm Weight - 0.71kg	Nozzle inc Cap
BPLR4BE	Receiver Flush Face Size 04, 3/4" NPTM	3/4" NPTM	Dimensions - 10x6x6cm Weight - 0.49kg	Receiver and Cap
BPLR4BE - CT	Receiver Flush Face Size 04, 3/4" NPTM, Cold Temp	3/4" NPTM, CT	Dimensions - 11x6x6cm Weight - 0.53kg	Receiver and Cap
BPLR4CE	Receiver Flush Face Size 04, 1" NPTM	1" NPTM	Dimensions - 10x6x6cm Weight - 0.49kg	Receiver and Cap
BPLR4CE - CT	Receiver Flush Face Size 04, 1" NPTM, Cold Temp	1" NPTM	Dimensions - 11x6x6cm Weight - 0.53kg	Receiver and Cap

Size 5



Part Number	Product Description	Tech Specs	Shipping Specs	Items Included
BPLN5BN	Nozzle Flush Face Size 05, 3/4" NPTF	3/4" NPTF	Dimensions - 8x6x6cm Weight - 0.7kg	Cap sold separately
BPLN5BN - CT	Nozzle Flush Face Size 05, 3/4" NPTF, Cold Temp	3/4" NPTF, CT	Dimensions - 9x5x5cm Weight - 0.84kg	Cap sold separately
BPLN5BNC	Nozzle Flush Face Size 05, 3/4" NPTF	3/4" NPTF	Dimensions - 10x6x6cm Weight - 0.71kg	Nozzle inc Cap
BPLN5BNC - CT	Nozzle Flush Face Size 05, 3/4" NPTF, Cold Temp	3/4" NPTF, CT	Dimensions - 10x6x6cm Weight - 0.71kg	Nozzle inc Cap
BPLN5CN	Nozzle Flush Face Size 05, 1" NPTF	1" NPTF	Dimensions - 8x6x6cm Weight - 0.7kg	Cap sold separately
BPLN5CN - CT	Nozzle Flush Face Size 05, 1" NPTF, Cold Temp	1" NPTF, CT	Dimensions - 9x5x5cm Weight - 0.84kg	Cap sold separately
BPLN5CNC	Nozzle Flush Face Size 05, 1" NPTF	1" NPTF	Dimensions - 10x6x6cm Weight - 0.71kg	Nozzle inc Cap
BPLN5CNC - CT	Nozzle Flush Face Size 05, 1" NPTF, Cold Temp	1" NPTF, CT	Dimensions - 10x6x6cm Weight - 0.71kg	Nozzle inc Cap
BPLR5BE	Receiver Flush Face Size 05, 3/4" NPTM	3/4" NPTM	Dimensions - 10x6x6cm Weight - 0.5kg	Receiver and Cap
BPLR5BE - CT	Receiver Flush Face Size 05, 3/4" NPTM, Cold Temp	3/4" NPTM	Dimensions - 11x6x6cm Weight - 0.53kg	Receiver and Cap
BPLR5CE	Receiver Flush Face Size 05, 1" NPTM	1" NPTM	Dimensions - 10x6x6cm Weight - 0.51kg	Receiver and Cap
BPLR5CE - CT	Receiver Flush Face Size 05, 1" NPTM, Cold Temp	1" NPTM	Dimensions - 11x6x6cm Weight - 0.53kg	Receiver and Cap

Size 6



Part Number	Product Description	Tech Specs	Shipping Specs	Items Included
BPLN6CN	Nozzle Flush Face Size 06, 1" NPTF	1" NPTF	Dimensions - 9X6X6cm Weight - 0.87kg	Cap sold separately
BPLN6CN - CT	Nozzle Flush Face Size 06, 1" NPTF, Cold Temp	1" NPTF, CT	Dimensions - 9x5x5cm Weight - 0.84kg	Cap sold separately
BPLN6CNC	Nozzle Flush Face Size 06, 1" NPTF	1" NPTF	Dimensions - 11x7x7cm Weight - 0.95kg	Nozzle inc Cap
BPLN6CNC - CT	Nozzle Flush Face Size 06, 1" NPTF, Cold Temp	1" NPTF, CT	Dimensions - 11x7x7cm Weight - 0.95kg	Nozzle inc Cap
BPLN6DN	Nozzle Flush Face Size 06, 1-1/4" NPTF	1-1/4" NPTF	Dimensions - 9X6X6cm Weight - 0.84kg	Cap sold separately
BPLN6DN - CT	Nozzle Flush Face Size 06, 1-1/4" NPTF, Cold Temp	1-1/4" NPTF, CT	Dimensions - 9x5x5cm Weight - 0.84kg	Cap sold separately
BPLN6DNC	Nozzle Flush Face Size 06, 1-1/4" NPTF	1-1/4" NPTF	Dimensions - 11x7x7cm Weight - 0.95kg	Nozzle inc Cap
BPLN6DNC - CT	Nozzle Flush Face Size 06, 1-1/4" NPTF, Cold Temp	1-1/4" NPTF, CT	Dimensions - 11x7x7cm Weight - 0.95kg	Nozzle inc Cap
BPLR6BE	Receiver Flush Face Size 06, 3/4" NPTM	3/4" NPTM	Dimensions - 10x6x6cm Weight - 0.55kg	Receiver and Cap
BPLR6BE - CT	Receiver Flush Face Size 06, 3/4" NPTM, Cold Temp	3/4" NPTM, CT	Dimensions - 11x6x6cm Weight - 0.53kg	Receiver and Cap
BPLR6CE	Receiver Flush Face Size 06, 1" NPTM	1" NPTM	Dimensions - 10x6x6cm Weight - 0.55kg	Receiver and Cap
BPLR6CE - CT	Receiver Flush Face Size 06, 1" NPTM, Cold Temp	1" NPTM, CT	Dimensions - 11x6x6cm Weight - 0.53kg	Receiver and Cap
BPLR6DE	Receiver Flush Face Size 06, 1-1/4" NPTM	1-1/4" NPTM	Dimensions - 10x6x6cm Weight - 0.57kg	Receiver and Cap
BPLR6DE - CT	Receiver Flush Face Size 06, 1-1/4" NPTM, Cold Temp	1-1/4" NPTM, CT	Dimensions - 11x6x6cm Weight - 0.53kg	Receiver and Cap

Size 7



Part Number	Product Description	Tech Specs	Shipping Specs	Items Included
BPLN7BN	Nozzle Flush Face Size 07, 3/4" NPTF	3/4" NPTF	Dimensions - 8x5x5cm Weight - 0.52kg	Cap sold separately
BPLN7BN - CT	Nozzle Flush Face Size 07, 3/4" NPTF, Cold Temp	3/4" NPTF, CT	Dimensions - 9x5x5cm Weight - 0.84kg	Cap sold separately
BPLN7BNC	Nozzle Flush Face Size 07, 3/4" NPTF	3/4" NPTF	Dimensions - 11x7x7cm Weight - 0.95kg	Nozzle inc Cap
BPLN7BNC - CT	Nozzle Flush Face Size 07, 3/4" NPTF, Cold Temp	3/4" NPTF, CT	Dimensions - 11x7x7cm Weight - 0.95kg	Nozzle inc Cap
BPLN7CN	Nozzle Flush Face Size 07, 1" NPTF	1" NPTF	Dimensions - 8x5x5cm Weight - 0.5kg	Cap sold separately
BPLN7CN - CT	Nozzle Flush Face Size 07, 1" NPTF, Cold Temp	1" NPTF, CT	Dimensions - 9x5x5cm Weight - 0.84kg	Cap sold separately
BPLN7CNC	Nozzle Flush Face Size 07, 1" NPTF	1" NPTF	Dimensions - 11x7x7cm Weight - 0.95kg	Nozzle inc Cap
BPLN7CNC - CT	Nozzle Flush Face Size 07, 1" NPTF, Cold Temp	1" NPTF, CT	Dimensions - 11x7x7cm Weight - 0.95kg	Nozzle inc Cap
BPLR7BE	Receiver Flush Face Size 07, 3/4" NPTM	3/4" NPTM	Dimensions - 10x6x6cm Weight - 0.44kg	Receiver and Cap
BPLR7BE -CT	Receiver Flush Face Size 07, 3/4" NPTM, Cold Temp	3/4" NPTM, CT	Dimensions - 11x6x6cm Weight - 0.53kg	Receiver and Cap
BPLR7CE	Receiver Flush Face Size 07, 1" NPTM	1" NPTM	Dimensions - 10x6x6cm Weight - 0.44kg	Receiver and Cap
BPLR7CE - CT	Receiver Flush Face Size 07, 1" NPTM, Cold Temp	1" NPTM, CT	Dimensions - 11x6x6cm Weight - 0.53kg	Receiver and Cap

Size 8



Part Number	Product Description	Tech Specs	Shipping Specs	Items Included
BPLN8BN	Nozzle Flush Face Size 08, 3/4" NPTF	3/4" NPTF	Dimensions - 9x5x5cm Weight - 0.58kg	Cap sold separately
BPLN8BN - CT	Nozzle Flush Face Size 08, 3/4" NPTF, Cold Temp	3/4" NPTF, CT	Dimensions - 9x5x5cm Weight - 0.84kg	Cap sold separately
BPLN8BNC	Nozzle Flush Face Size 08, 3/4" NPTF	3/4" NPTF	Dimensions - 11x7x7cm Weight - 0.95kg	Nozzle inc Cap
BPLN8BNC - CT	Nozzle Flush Face Size 08, 3/4" NPTF, Cold Temp	3/4" NPTF, CT	Dimensions - 11x7x7cm Weight - 0.95kg	Nozzle inc Cap
BPLN8CN	Nozzle Flush Face Size 08, 1" NPTF	1" NPTF	Dimensions - 8x5x5cm Weight - 0.57kg	Cap sold separately
BPLN8CN - CT	Nozzle Flush Face Size 08, 1" NPTF, Cold Temp	1" NPTF, CT	Dimensions - 9x5x5cm Weight - 0.84kg	Cap sold separately
BPLN8CNC	Nozzle Flush Face Size 08, 1" NPTF	1" NPTF	Dimensions - 11x7x7cm Weight - 0.95kg	Nozzle inc Cap
BPLN8CNC - CT	Nozzle Flush Face Size 08, 1" NPTF, Cold Temp	1" NPTF, CT	Dimensions - 11x7x7cm Weight - 0.95kg	Nozzle inc Cap
BPLR8BE	Receiver Flush Face Size 08, 3/4" NPTM	3/4" NPTM	Dimensions - 10x6x6cm Weight - 0.45kg	Receiver and Cap
BPLR8BE - CT	Receiver Flush Face Size 08, 3/4" NPTM, Cold Temp	3/4" NPTM, CT	Dimensions - 11x6x6cm Weight - 0.53kg	Receiver and Cap
BPLR8CE	Receiver Flush Face Size 08, 1" NPTM	1" NPTM	Dimensions - 10x6x6cm Weight - 0.45kg	Receiver and Cap
BPLR8CE - CT	Receiver Flush Face Size 08, 1" NPTM, Cold Temp	1" NPTM, CT	Dimensions - 11x6x6cm Weight - 0.53kg	Receiver and Cap

Size 9



Part Number	Product Description	Tech Specs	Shipping Specs	Items Included
BPLN9BN	Nozzle Flush Face Size 09, 3/4" NPTF	3/4" NPTF	Dimensions - 9X6X6cm Weight - 0.79kg	Cap sold separately
BPLN9BN - CT	Nozzle Flush Face Size 09, 3/4" NPTF, Cold Temp	3/4" NPTF, CT	Dimensions - 9x5x5cm Weight - 0.84kg	Cap sold separately
BPLN9BNC	Nozzle Flush Face Size 09, 3/4" NPTF	3/4" NPTF	Dimensions - 11x7x7cm Weight - 0.95kg	Nozzle inc Cap
BPLN9BNC - CT	Nozzle Flush Face Size 09, 3/4" NPTF, Cold Temp	3/4" NPTF, CT	Dimensions - 11x7x7cm Weight - 0.95kg	Nozzle inc Cap
BPLN9CN	Nozzle Flush Face Size 09, 1" NPTF	1" NPTF	Dimensions - 9X6X6cm Weight - 0.77kg	Cap sold separately
BPLN9CN - CT	Nozzle Flush Face Size 09, 1" NPTF, Cold Temp	1" NPTF, CT	Dimensions - 9x5x5cm Weight - 0.84kg	Cap sold separately
BPLN9CNC	Nozzle Flush Face Size 09, 1" NPTF	1" NPTF	Dimensions - 11x7x7cm Weight - 0.95kg	Nozzle inc Cap
BPLN9CNC - CT	Nozzle Flush Face Size 09, 1" NPTF, Cold Temp	1" NPTF, CT	Dimensions - 11x7x7cm Weight - 0.95kg	Nozzle inc Cap
BPLR9BE	Receiver Flush Face Size 09, 3/4" NPTM	3/4" NPTM	Dimensions - 10x6x6cm Weight - 0.51kg	Receiver and Cap
BPLR9BE - CT	Receiver Flush Face Size 09, 3/4" NPTM, Cold Temp	3/4" NPTM, CT	Dimensions - 11x6x6cm Weight - 0.53kg	Receiver and Cap
BPLR9CE	Receiver Flush Face Size 09, 1" NPTM	1" NPTM	Dimensions - 10x6x6cm Weight - 0.51kg	Receiver and Cap
BPLR9CE - CT	Receiver Flush Face Size 09, 1" NPTM, Cold Temp	1" NPTM, CT	Dimensions - 11x6x6cm Weight - 0.53kg	Receiver and Cap

Size 10



Part Number	Product Description	Tech Specs	Shipping Specs	Items Included
BPLN10BN	Nozzle Flush Face Size 10, 3/4" NPTF	3/4" NPTF	Dimensions - 9x5x5cm Weight - 0.84kg	Cap sold separately
BPLN10BN - CT	Nozzle Flush Face Size 10, 3/4" NPTF, Cold Temp	3/4" NPTF, CT, CT	Dimensions - 9x5x5cm Weight - 0.84kg	Cap sold separately
BPLN10BNC	Nozzle Flush Face Size 10, 3/4" NPTF	3/4" NPTF	Dimensions - 10x7x7cm Weight - 0.91kg	Nozzle inc Cap
BPLN10BNC - CT	Nozzle Flush Face Size 10, 3/4" NPTF, Cold Temp	3/4" NPTF, CT	Dimensions - 10x7x7cm Weight - 0.91kg	Nozzle inc Cap
BPLN10CN	Nozzle Flush Face Size 10, 1" NPTF	1" NPTF	Dimensions - 9x5x5cm Weight - 0.82kg	Cap sold separately
BPLN10CN - CT	Nozzle Flush Face Size 10, 1" NPTF, Cold Temp	1" NPTF, CT	Dimensions - 9x5x5cm Weight - 0.84kg	Cap sold separately
BPLN10CNC	Nozzle Flush Face Size 10, 1" NPTF	1" NPTF	Dimensions - 10x7x7cm Weight - 0.91kg	Nozzle inc Cap
BPLN10CNC - CT	Nozzle Flush Face Size 10, 1" NPTF, Cold Temp	1" NPTF, CT	Dimensions - 10x7x7cm Weight - 0.91kg	Nozzle inc Cap
BPLR10BE	Receiver Flush Face Size 10, 3/4" NPTM	3/4" NPTM	Dimensions - 11x6x6cm Weight - 0.53kg	Receiver and Cap
BPLR10BE - CT	Receiver Flush Face Size 10, 3/4" NPTM, Cold Temp	3/4" NPTM, CT	Dimensions - 11x6x6cm Weight - 0.53kg	Receiver and Cap
BPLR10CE	Receiver Flush Face Size 10, 1" NPTM	1" NPTM	Dimensions - 10x6x6cm Weight - 0.53kg	Receiver and Cap
BPLR10CE - CT	Receiver Flush Face Size 10, 1" NPTM, Cold Temp	1" NPTM, CT	Dimensions - 11x6x6cm Weight - 0.53kg	Receiver and Cap

Size 11

The Size 11 nozzle and receiver were specifically designed to connect whilst subjected to residual line pressure.

They can be used with oils and other fluids used in mining, rail, ports and other heavy industries.

This coupling is suitable for underground mines requiring a very robust, all-steel flush face coupling.



Part Number	Product Description	Tech Specs	Shipping Specs	Items Included
BPLN11BP	Nozzle Flush Face Size 11, 3/4" NPTF	3/4" NPTF	Dimensions - 10x6x6cm Weight - 1.2kg	Cap sold separately
BPLN11BP - CT	Nozzle Flush Face Size 11, 3/4" NPTF, Cold Temp	3/4" NPTF, CT	Dimensions - 9x5x5cm Weight - 0.84kg	Cap sold separately
BPLN11BPC	Nozzle Flush Face Size 11, 3/4" NPTF	3/4" NPTF	Dimensions - 10x7x7cm Weight - 0.91kg	Nozzle inc Cap
BPLN11BPC - CT	Nozzle Flush Face Size 11, 3/4" NPTF, Cold Temp	3/4" NPTF, CT	Dimensions - 10x7x7cm Weight - 0.91kg	Nozzle inc Cap
BPLN11CP	Nozzle Flush Face Size 11, 1" NPTF	1" NPTF	Dimensions - 10x6x6cm Weight - 1.1kg	Cap sold separately
BPLN11CP - CT	Nozzle Flush Face Size 11, 1" NPTF, Cold Temp	1" NPTF, CT	Dimensions - 9x5x5cm Weight - 0.84kg	Cap sold separately
BPLN11CPC	Nozzle Flush Face Size 11, 1" NPTF	1" NPTF	Dimensions - 10x7x7cm Weight - 0.91kg	Nozzle inc Cap
BPLN11CPC - CT	Nozzle Flush Face Size 11, 1" NPTF, Cold Temp	1" NPTF, CT	Dimensions - 10x7x7cm Weight - 0.91kg	Nozzle inc Cap
BPLN11BN	Nozzle Flush Face Size 11, 3/4" NPTF	3/4" NPTF	Dimensions - 6x5x5cm Weight - 0.5kg	Cap sold separately
BPLN11BNC	Nozzle Flush Face Size 11, 3/4" NPTF	3/4" NPTF	Dimensions - 9x6x6cm Weight - 0.56kg	Nozzle inc Cap
BPLR11BE	Receiver Flush Face Size 11, 3/4" NPTM	3/4" NPTM	Dimensions - 10x5x5cm Weight - 0.82kg	Receiver and Cap
BPLR11BE - CT	Receiver Flush Face Size 11, 3/4" NPTM, Cold Temp	3/4" NPTM, CT	Dimensions - 11x6x6cm Weight - 0.53kg	Receiver and Cap
BPLR11CE	Receiver Flush Face Size 11, 1" NPTM	1" NPTM	Dimensions - 11x6x6cm Weight - 0.69kg	Receiver and Cap
BPLR11CE - CT	Receiver Flush Face Size 11, 1" NPTM, Cold Temp	1" NPTM, CT	Dimensions - 11x6x6cm Weight - 0.53kg	Receiver and Cap



Overfill Protection

Banlaw FillSafe™ overfill protection systems ensure safe, fast, reliable filling, with zero pressure build-up in the tank.

We manufacture both mechanical and electronic solutions for tank overfill protection, catering to storage tanks and diesel-powered machines of all sizes.



Go to

[FillSafe Zero](#)

[FillSafe Power](#)

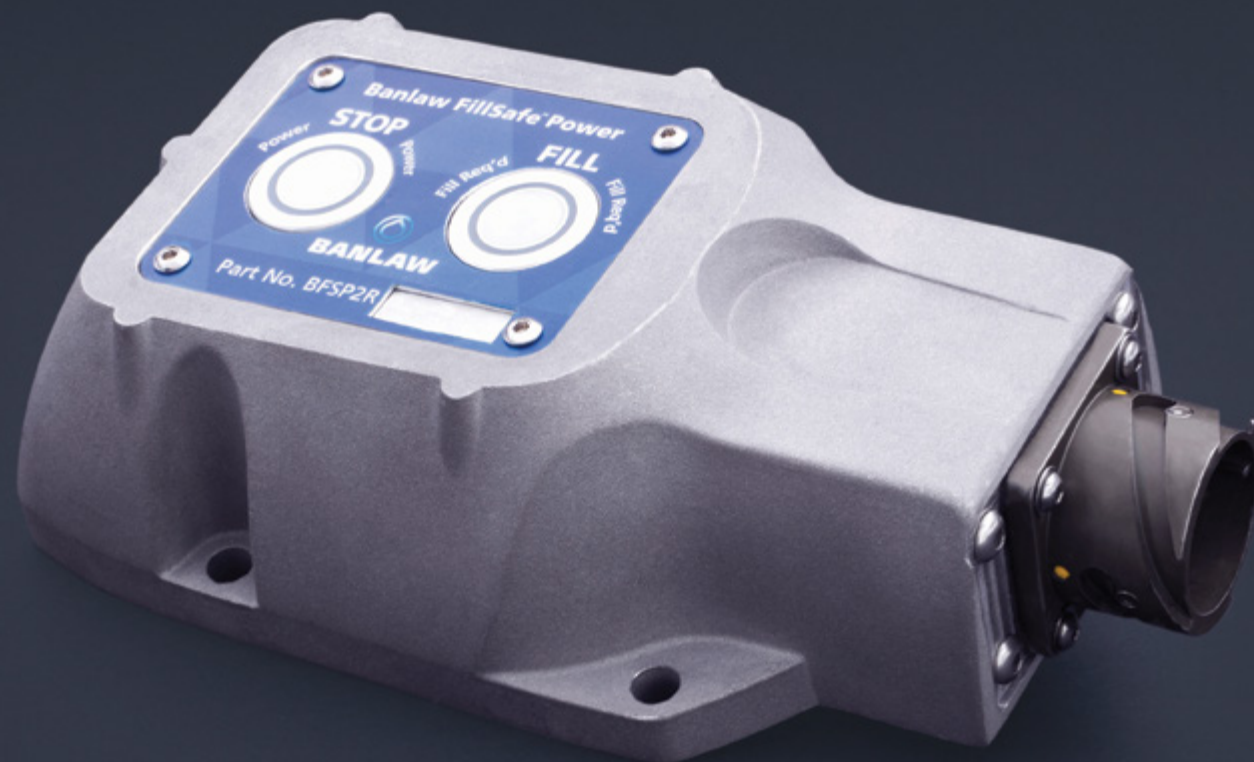
Overfill Protection | FillSafe Power

FillSafe Power

Our electronic tank overfill protection system is totally unrestricted by flow rate, and suitable for use with many fluid types.

It is considered the go-to solution for mining excavators and railway locomotives, but is also perfect for other critical equipment where very high flow rates, fire-safe installation, and integrated failsafe functionality are a priority.

Go to

[Controller](#)
[Level Switch](#)
[Harness](#)
[Electric Actuated Valve](#)
[Check Valve](#)


Controller



Part Number	Product Description	Tech Specs	Shipping Specs
BFSP2RKDAL	FillSafe Power Controller	24VDC, DCH, 15MIN, L	Dimensions - 19x9x5cm Weight - 1kg
BFSP2RKDAR	FillSafe Power Controller	24VDC, DCH, 15MIN, R	Dimensions - 19x9x5cm Weight - 1kg
BFSP2RKDBL	FillSafe Power Controller	24VDC, DCH, 30MIN, L	Dimensions - 19x9x5cm Weight - 1kg
BFSP2RKDBR	FillSafe Power Controller	24VDC, DCH, 30MIN, R	Dimensions - 19x9x5cm Weight - 1kg
BFSP2RKDCL	FillSafe Power Controller	24VDC, DCH, 45MIN, L	Dimensions - 19x9x5cm Weight - 1kg
BFSP2RKDCR	FillSafe Power Controller	24VDC, DCH, 45MIN, R	Dimensions - 19x9x5cm Weight - 1kg
BFSP2RKDDL	FillSafe Power Controller	24VDC, DCH, 60MIN, L	Dimensions - 19x9x5cm Weight - 1kg
BFSP2RKDDR	FillSafe Power Controller	24VDC, DCH, 60MIN, R	Dimensions - 19x9x5cm Weight - 1kg
BFSP2RKMAL	FillSafe Power Controller	24VDC, MIL, 15MIN, L	Dimensions - 19x9x5cm Weight - 1kg
BFSP2RKMAR	FillSafe Power Controller	24VDC, MIL, 15MIN, R	Dimensions - 19x9x5cm Weight - 1kg
BFSP2RKMBL	FillSafe Power Controller	24VDC, MIL, 30MIN, L	Dimensions - 19x9x5cm Weight - 1kg
BFSP2RKMBR	FillSafe Power Controller	24VDC, MIL, 30MIN, R	Dimensions - 19x9x5cm Weight - 1kg
BFSP2RKMCL	FillSafe Power Controller	24VDC, MIL, 45MIN, L	Dimensions - 19x9x5cm Weight - 1kg
BFSP2RKMCR	FillSafe Power Controller	24VDC, MIL, 45MIN, R	Dimensions - 19x9x5cm Weight - 1kg
BFSP2RKMDL	FillSafe Power Controller	24VDC, MIL, 60MIN, L	Dimensions - 19x9x5cm Weight - 1kg
BFSP2RKMDR	FillSafe Power Controller	24VDC, MIL, 60MIN, R	Dimensions - 19x9x5cm Weight - 1kg
BFSP2RKTAL	FillSafe Power Controller	24VDC, M20, 15MIN, L	Dimensions - 19x9x5cm Weight - 1kg
BFSP2RKTAR	FillSafe Power Controller	24VDC, M20, 15MIN, R	Dimensions - 19x9x5cm Weight - 1kg
BFSP2RKTBL	FillSafe Power Controller	24VDC, M20, 30MIN, L	Dimensions - 19x9x5cm Weight - 1kg
BFSP2RKTBR	FillSafe Power Controller	24VDC, M20, 30MIN, R	Dimensions - 19x9x5cm Weight - 1kg
BFSP2RKTCL	FillSafe Power Controller	24VDC, M20, 45MIN, L	Dimensions - 19x9x5cm Weight - 1kg

Continued on next page...

Controller

(continued)

Part Number	Product Description	Tech Specs	Shipping Specs
BFSP2RKTCR	FillSafe Power Controller	24VDC, M20, 45MIN, R	Dimensions - 19x9x5cm Weight - 1kg
BFSP2RKTDL	FillSafe Power Controller	24VDC, M20, 60MIN, L	Dimensions - 19x9x5cm Weight - 1kg
BFSP2RKTDR	FillSafe Power Controller	24VDC, M20, 60MIN, R	Dimensions - 19x9x5cm Weight - 1kg
BFSP2RNDAL	FillSafe Power Controller	12VDC, DCH, 15MIN, L	Dimensions - 19x9x5cm Weight - 1kg
BFSP2RNDAR	FillSafe Power Controller	12VDC, DCH, 15MIN, R	Dimensions - 19x9x5cm Weight - 1kg
BFSP2RNDBL	FillSafe Power Controller	12VDC, DCH, 30MIN, L	Dimensions - 19x9x5cm Weight - 1kg
BFSP2RNDBR	FillSafe Power Controller	12VDC, DCH, 30MIN, R	Dimensions - 19x9x5cm Weight - 1kg
BFSP2RNDCL	FillSafe Power Controller	12VDC, DCH, 45MIN, L	Dimensions - 19x9x5cm Weight - 1kg
BFSP2RNDCR	FillSafe Power Controller	12VDC, DCH, 45MIN, R	Dimensions - 19x9x5cm Weight - 1kg
BFSP2RNDDL	FillSafe Power Controller	12VDC, DCH, 60MIN, L	Dimensions - 19x9x5cm Weight - 1kg
BFSP2RNDDR	FillSafe Power Controller	12VDC, DCH, 60MIN, R	Dimensions - 19x9x5cm Weight - 1kg
BFSP2RNMAL	FillSafe Power Controller	12VDC, MIL, 15MIN, L	Dimensions - 19x9x5cm Weight - 1kg
BFSP2RNMAR	FillSafe Power Controller	12VDC, MIL, 15MIN, R	Dimensions - 19x9x5cm Weight - 1kg
BFSP2RNMBL	FillSafe Power Controller	12VDC, MIL, 30MIN, L	Dimensions - 19x9x5cm Weight - 1kg
BFSP2RNMBR	FillSafe Power Controller	12VDC, MIL, 30MIN, R	Dimensions - 19x9x5cm Weight - 1kg
BFSP2RNMCL	FillSafe Power Controller	12VDC, MIL, 45MIN, L	Dimensions - 19x9x5cm Weight - 1kg
BFSP2RNMCR	FillSafe Power Controller	12VDC, MIL, 45MIN, R	Dimensions - 19x9x5cm Weight - 1kg
BFSP2RNMDL	FillSafe Power Controller	12VDC, MIL, 60MIN, L	Dimensions - 19x9x5cm Weight - 1kg
BFSP2RNMDR	FillSafe Power Controller	12VDC, MIL, 60MIN, R	Dimensions - 19x9x5cm Weight - 1kg
BFSP2RNTAL	FillSafe Power Controller	12VDC, M20, 15MIN, L	Dimensions - 19x9x5cm Weight - 1kg
BFSP2RNTAR	FillSafe Power Controller	12VDC, M20, 15MIN, R	Dimensions - 19x9x5cm Weight - 1kg
BFSP2RNTBL	FillSafe Power Controller	12VDC, M20, 30MIN, L	Dimensions - 19x9x5cm Weight - 1kg
BFSP2RNTBR	FillSafe Power Controller	12VDC, M20, 30MIN, R	Dimensions - 19x9x5cm Weight - 1kg
BFSP2RNTCL	FillSafe Power Controller	12VDC, M20, 45MIN, L	Dimensions - 19x9x5cm Weight - 1kg
BFSP2RNTCR	FillSafe Power Controller	12VDC, M20, 45MIN, R	Dimensions - 19x9x5cm Weight - 1kg
BFSP2RNTDL	FillSafe Power Controller	12VDC, M20, 60MIN, L	Dimensions - 19x9x5cm Weight - 1kg
BFSP2RNTDR	FillSafe Power Controller	12VDC, M20, 60MIN, R	Dimensions - 19x9x5cm Weight - 1kg

Overfill Protection | FillSafe Power

Level Switch

Custom Level Switches are available to support top and side mount applications, as well as multiple pre-set float levels.



Part Number	Product Description	Tech Specs	Shipping Specs
BFSZP3007	FillSafe Power Level Switch	1" BSPM, 2 FLOAT	Dimensions - 34x7x7cm Weight - 0.48kg
BFSZP3007H	FillSafe Power Level Switch	HARNESS	
BFSZP3011A	FillSafe Power Level Switch	FLANGE, 5 FLOAT	

Harness

Part Number	Product Description	Tech Specs
BFSZP3031	Hitachi EH5000 FillSafe Power Harness	HARNESS, EH5000
BFSZP3033	Hitachi EX3600 FillSafe Power Harness	HARNESS, EX3600
BFSZP3034	Hitachi EX8000 FillSafe Power Harness	HARNESS, ES8000

Electric Actuated Valve

Part Number	Product Description	Tech Specs
BFSZP3032H	Valve FillSafe Power Electric Actuated Valve 2-1/2" ANSI 150	2-1/2" ANSI150, HARNESS
BFSZP4001	Valve FillSafe Power Electric Actuated Valve	2" BSPTF,
BFSZP4002	Valve FillSafe Power Electric Actuated Valve	2-1/2" BSPTF,

Check Valve

Part Number	Product Description	Tech Specs
BFSZP3030	Valve FillSafe Power Check Valve 2-1/2" ANSI 150	2-1/2" ANSI150

Overfill Protection | FillSafe Zero

FillSafe Zero

Our mechanical tank overfill protection system enables safe, high-speed diesel refuelling, and is cost-efficient to install on a wide range of vehicles, and stationary tanks.

Product variants are available that fit directly into a 2" shell, refuel up to 1000lpm, include a Dry Break Receiver, or are provided with process connections for in-line deployment.

Go to

[Flow Control Valve - 800 Series](#)

[Flow Control Valve - 1000 Series](#)

[Level Sensor](#)

[Vented Level Sensor](#)

[Pilot Line](#)



Flow Control Valve

800 Series FCV



Part Number	Product Description	Tech Specs	Shipping Specs	Compatible products
BFCV23	Flow Control Valve FillSafe Zero 800 Series 4" NPTM, Mining	4" NPTM		BNM800 Series Nozzle
BFCV23 - CT	Flow Control Valve FillSafe Zero 800 Series 4" NPTM, Mining - Cold Temp	4" NPTM, CT		BNM800 Series Nozzle
BFCV23R	Flow Control Valve FillSafe Zero 800 Series 4" NPTM, Rail	4" NPTM		BNM800 Series Nozzle
BFCV23R - CT	Flow Control Valve FillSafe Zero 800 Series 4" NPTM, Rail - Cold Temp	4" NPTM, CT		BNR800 Series Nozzle
BFCV50	Flow Control Valve FillSafe Zero 800 Series 2" NPTM, Mining	2" NPTM	Dimensions - 29x8x8cm Weight - 1.75kg	BNM800 Series Nozzle
BFCV50 - CT	Flow Control Valve FillSafe Zero 800 Series 2" NPTM, Mining - Cold Temp	2" NPTM, CT	Dimensions - 29x8x8cm Weight - 1.75kg	BNM800 Series Nozzle
BFCV50R	Flow Control Valve FillSafe Zero 800 Series 2" NPTM, Rail	2" NPTM		BNR800 Series Nozzle
BFCV50R - CT	Flow Control Valve FillSafe Zero 800 Series 2" NPTM, Rail - Cold Temp	2" NPTM, CT		BNR800 Series Nozzle
BFCV50NPTF	Flow Control Valve FillSafe Zero - Inline / Remote Fill	2" NPTMM		2" NPT Male Fittings

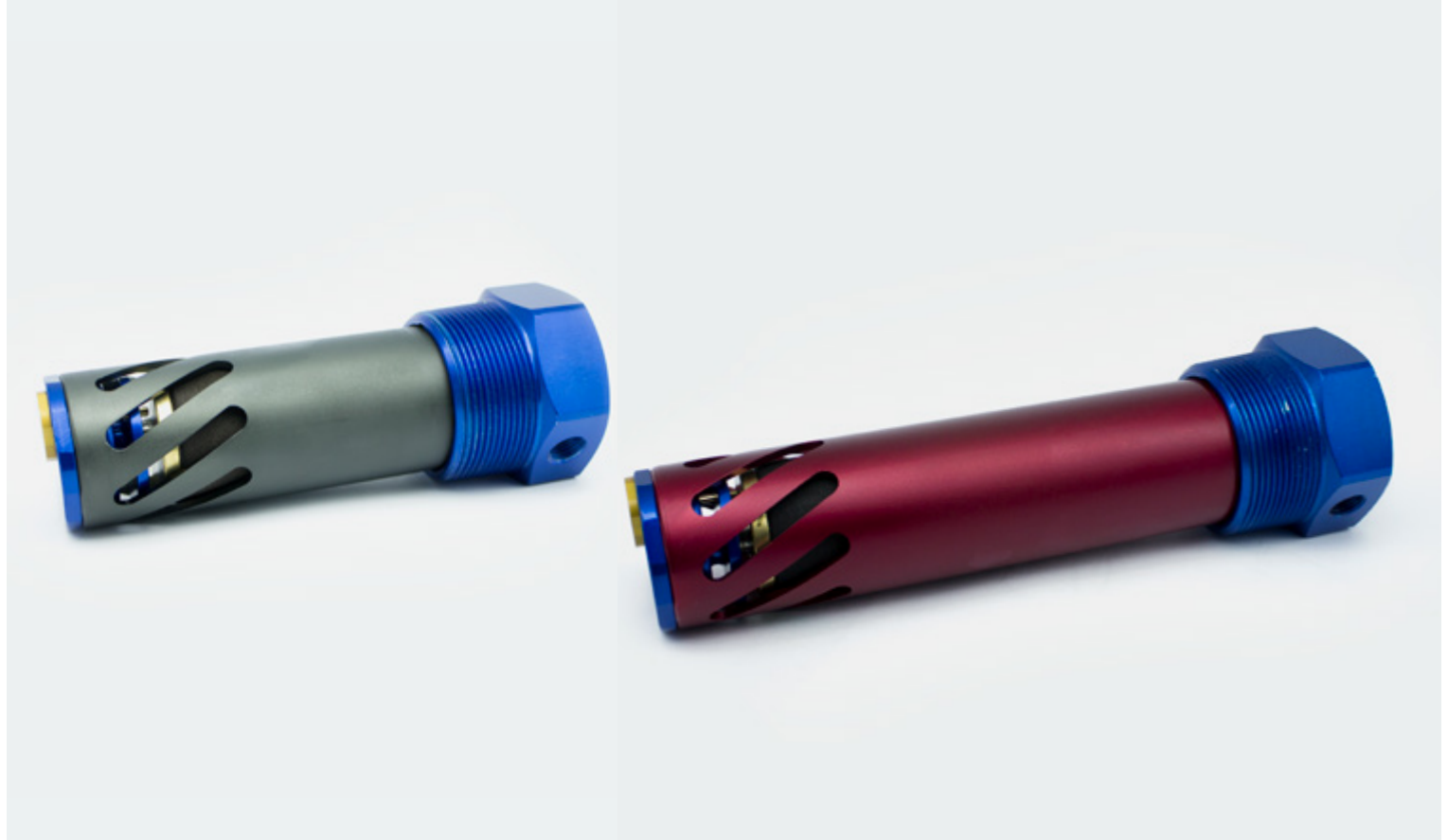
Flow Control Valve

1000 Series FCV



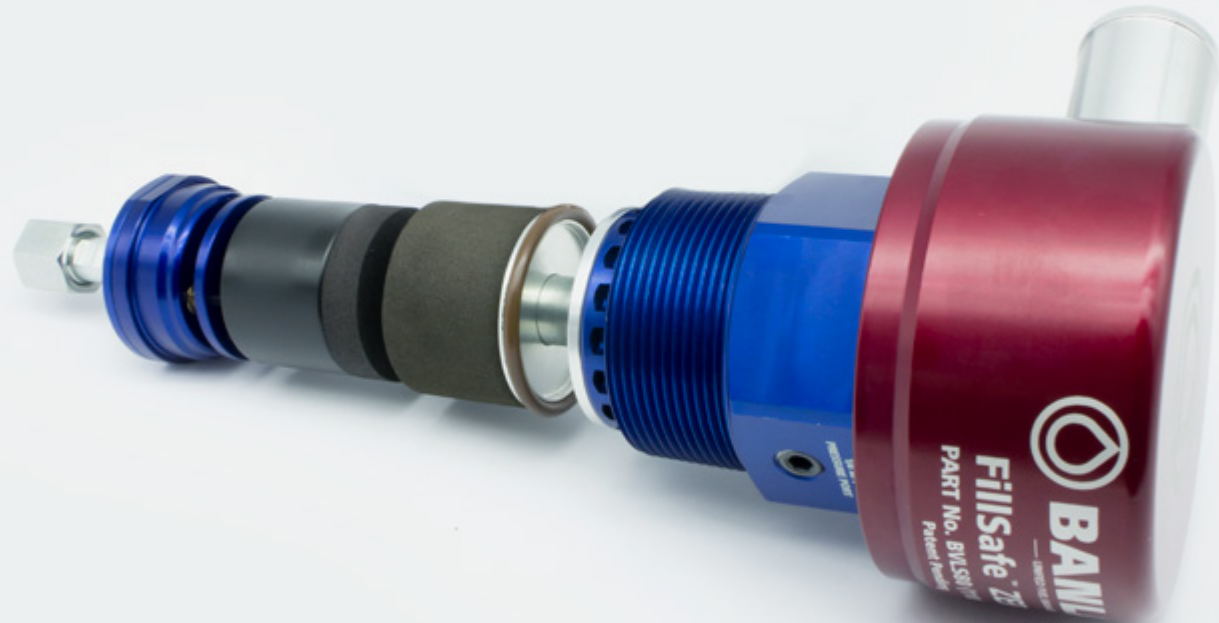
Part Number	Product Description	Tech Specs	Compatible products
BFCV43	Flow Control Valve FillSafe Zero 1000 Series 4" NPTM	4" NPTM	BN1000 Series Nozzle
BFCV43 - CT	Flow Control Valve FillSafe Zero 1000 Series 4" NPTM, - Cold Temp	4" NPTM, CT	BN1000 Series Nozzle

Level Sensor



Part Number	Product Description	Tech Specs	Shipping Specs
BLS100	100mm Ullage FillSafe Zero Level Sensor 2" NPTM, Rail	2" NPTM	Dimensions - 24x7x7cm Weight - 0.82kg
BLS100 - CT	100mm Ullage FillSafe Zero Level Sensor 2" NPTM, Rail Cold Temp	2" NPTM, CT	
BLS100B	100mm Ullage FillSafe Zero Level Sensor 2" NPTM, Mining	2" NPTM	Dimensions - 24x7x7cm Weight - 0.82kg
BLS100B - CT	100mm Ullage FillSafe Zero Level Sensor 2" NPTM, Mining Cold Temp	2" NPTM, CT	
BLS200B	200mm Ullage FillSafe Zero Level Sensor 2" NPTM, Mining	2" NPTM	
BLS200B - CT	200mm Ullage FillSafe Zero Level Sensor 2" NPTM, Mining Cold Temp	2" NPTM, CT	
BLS300B	300mm Ullage FillSafe Zero Level Sensor 2" NPTM, Mining	2" NPTM	
BLS300B - CT	300mm Ullage FillSafe Zero Level Sensor 2" NPTM, Mining Cold Temp	2" NPTM, CT	
BLS40	40mm Ullage FillSafe Zero Level Sensor 2" NPTM, Rail	2" NPTM	Dimensions - 20x7x7cm Weight - 0.73kg
BLS40 - CT	40mm Ullage FillSafe Zero Level Sensor 2" NPTM, Rail Cold Temp	2" NPTM, CT	
BLS40B	40mm Ullage FillSafe Zero Level Sensor 2" NPTM, Mining	2" NPTM	Dimensions - 20x7x7cm Weight - 0.73kg
BLS40B - CT	40mm Ullage FillSafe Zero Level Sensor 2" NPTM, Mining Cold Temp	2" NPTM, CT	

Vented Level Sensor



Part Number	Product Description	Tech Specs	Shipping Specs
BVLS180	180mm Ullage FillSafe Zero Vented Level Sensor 2" NPTM, 16psi	2" NPTM, 16PSI	Dimensions - 15x16x40cm Weight - 1.9kg
BVLS180 - CT	180mm Ullage FillSafe Zero Vented Level Sensor 2" NPTM, 16psi - Cold Temp	2" NPTM, CT	Dimensions - 15x16x40cm Weight - 1.9kg
BVLS180 - L	180mm Ullage FillSafe Zero Vented Level Sensor 2" NPTM, 7psi	2" NPTM, 7PSI	Dimensions - 15x16x40cm Weight - 1.9kg
BVLS180 - L - CT	180mm Ullage FillSafe Zero Vented Level Sensor 2" NPTM, 7psi - Cold Temp	2" NPTM, CT	Dimensions - 15x16x40cm Weight - 1.9kg
BVLS80	80mm Ullage FillSafe Zero Vented Level Sensor 2" NPTM, 16psi	2" NPTM, 16PSI	Dimensions - 15x16x30cm Weight - 1.7kg
BVLS80 - CT	80mm Ullage FillSafe Zero Vented Level Sensor 2" NPTM, 16psi - Cold Temp	2" NPTM, CT	Dimensions - 15x16x30cm Weight - 1.7kg
BVLS80 - L	80mm Ullage FillSafe Zero Vented Level Sensor 2" NPTM, 7psi	2" NPTM, 7PSI	Dimensions - 15x16x30cm Weight - 1.7kg
BVLS80 - L - CT	80mm Ullage FillSafe Zero Vented Level Sensor 2" NPTM, 7psi - Cold Temp	2" NPTM, CT	Dimensions - 15x16x30cm Weight - 1.7kg

Pilot Line



Part Number	Product Description	Tech Specs	Shipping Specs
BFCV50H-0.5M	Pilot Line FillSafe Zero 0.5m - Internal	9/16" JICFF, 0.5M	Dimensions - 36x42x2cm Weight - 0.46kg
BFCV50H-1.0M	Pilot Line FillSafe Zero 1.0m - Internal	9/16" JICFF, 1.0M	Dimensions - 36x42x2cm Weight - 0.46kg
BFCV50H-1.5M	Pilot Line FillSafe Zero 1.5m - Internal	9/16" JICFF, 1.5M	Dimensions - 36x42x2cm Weight - 0.46kg
BFCV50H-2.0M	Pilot Line FillSafe Zero 2.0m - Internal	9/16" JICFF, 2.0M	Dimensions - 38x44x2cm Weight - 0.5kg
BFCV50H-2.5M	Pilot Line FillSafe Zero 2.5m - Internal	9/16" JICFF, 2.5M	Dimensions - 38x44x2cm Weight - 0.5kg
BFCV50H-3.0M	Pilot Line FillSafe Zero 3.0m - Internal	9/16" JICFF, 3.0M	Dimensions - 38x44x2cm Weight - 0.5kg
BFCV50H-3.5M	Pilot Line FillSafe Zero 3.5m - Internal	9/16" JICFF, 3.5M	Dimensions - 38x44x2cm Weight - 0.5kg
BFCVH-3.0M	Pilot Line FillSafe Zero 3.0m - External	9/16" JICFF, 3.0M	Dimensions - 38x44x2cm Weight - 0.5kg

Fuel Management

Banlaw are the only OEM to manufacture a complete fuel management solution including Auto ID refuelling hardware, fixed or mobile site Controllers, and enterprise-class Resource Management Software.

Banlaw Fuel Management customers secure, monitor, transfer and dispense over 1,000,000,000 litres per month with accuracy levels >99.5%.

Go to

[Dry Break Auto ID](#)

[Splash Fill Auto ID](#)



Dry Break Auto ID

Go to

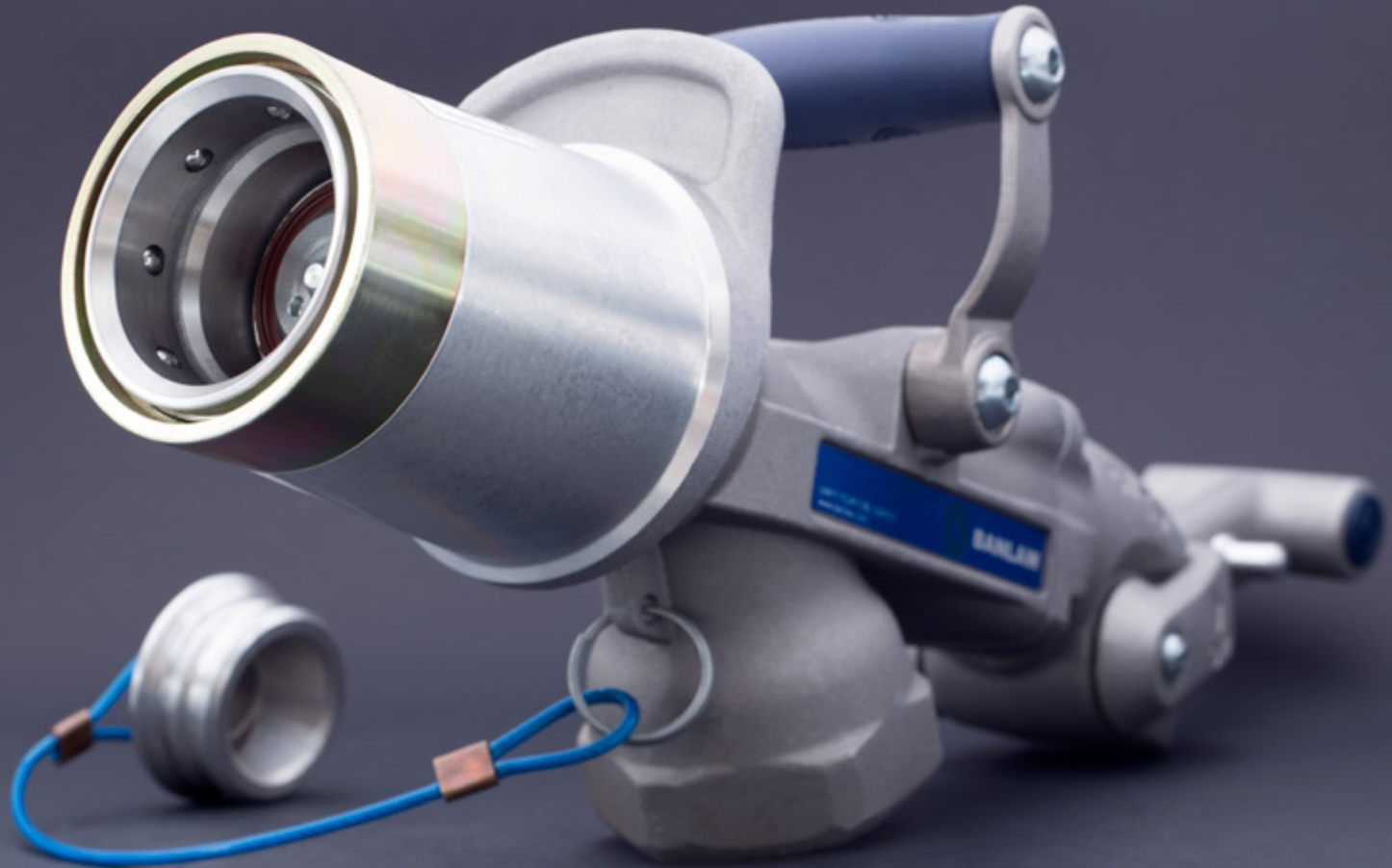
[Dry Break Nozzle - Auto ID](#)

[Dry Break Receiver - Auto ID](#)

[Swivel - Auto ID](#)

[Break Away Valve - Auto ID](#)

[Fillsafe Zero - Auto ID](#)



Dry Break Nozzle - Auto ID



Part Number	Product Description	Tech Specs	Shipping Specs	Items Included
BNF1000H	Nozzle Dry-Break 1000 Series 2" NPTF, Heavy FuelTrack	2" NPTF, HVY	Dimensions - 48x20x12cm Weight - 4.22kg	Plug
BNF1000M	Nozzle Dry-Break 1000 Series 2" NPTF, Medium FuelTrack	2" NPTF, MED	Dimensions - 48x20x12cm Weight - 4.22kg	Plug
BNF1000MH	Nozzle Dry-Break 1000 Series 2" NPTF, Medium-Heavy FuelTrack	2" NPTF, MED HVY	Dimensions - 48x20x12cm Weight - 4.22kg	Plug
BNF1000XH	Nozzle Dry-Break 1000 Series 2" NPTF, Extra Heavy FuelTrack	2" NPTF, XHVVY	Dimensions - 48x20x12cm Weight - 4.22kg	Plug
BNHF800M	Nozzle Dry-Break 800 Series 2" NPTF, Hydraulic Medium FuelTrack	2" NPTF, MED	Dimensions - 48x20x12cm Weight - 3.9kg	Plug
BNMF800H	Nozzle Dry-Break 800 Series 2" NPTF, Mining Heavy FuelTrack	2" NPTF, HVY	Dimensions - 48x20x12cm Weight - 3.9kg	Plug
BNMF800H-CT	Nozzle Dry-Break 800 Series 2" NPTF, Mining Heavy FuelTrack Cold Temp	2" NPTF, HVY, CT	Dimensions - 48x20x12cm Weight - 3.9kg	Plug
BNMF800L	Nozzle Dry-Break 800 Series 2" NPTF, Mining Light FuelTrack	2" NPTF, LT	Dimensions - 48x20x12cm Weight - 3.9kg	Plug
BNMF800L-CT	Nozzle Dry-Break 800 Series 2" NPTF, Mining Light FuelTrack Cold Temp	2" NPTF, LT, CT	Dimensions - 48x20x12cm Weight - 3.9kg	Plug
BNMF800M	Nozzle Dry-Break 800 Series 2" NPTF, Mining Medium FuelTrack	2" NPTF, MED	Dimensions - 48x20x12cm Weight - 3.9kg	Plug
BNMF800M-CT	Nozzle Dry-Break 800 Series 2" NPTF, Mining Medium FuelTrack Cold Temp	2" NPTF, MED, CT	Dimensions - 48x20x12cm Weight - 3.9kg	Plug
BNMF800MH	Nozzle Dry-Break 800 Series 2" NPTF, Mining Medium-Heavy FuelTrack	2" NPTF, MED HVY	Dimensions - 48x20x12cm Weight - 3.9kg	Plug
BNMF800MH-CT	Nozzle Dry-Break 800 Series 2" NPTF, Mining Medium-Heavy FuelTrack Cold Temp	2" NPTF, MED HVY, CT	Dimensions - 48x20x12cm Weight - 3.9kg	Plug
BNMF800ML	Nozzle Dry-Break 800 Series 2" NPTF, Mining Light-Medium FuelTrack	2" NPTF, MED LT	Dimensions - 48x20x12cm Weight - 3.9kg	Plug
BNMF800ML-CT	Nozzle Dry-Break 800 Series 2" NPTF, Mining Light-Medium FuelTrack Cold Temp	2" NPTF, MED LT, CT	Dimensions - 48x20x12cm Weight - 3.9kg	Plug

Dry Break Receiver - Auto ID



Part Number	Product Description	Tech Specs	Shipping Specs	Items Included	Compatible products
BFT23KCAT	Receiver Dry-Break 800 Series 2" NPTM, Mining-Caterpillar Light FuelTrack	2" NPTM, LT, CAT	Dimensions - 13x8x8cm Weight - 1.16kg	Cap	BNMF800 Series Nozzle
BFT23KH	Receiver Dry-Break 800 Series 2" NPTM, Mining Heavy FuelTrack	2" NPTM, HVY	Dimensions - 13x8x8cm Weight - 1.16kg	Cap	BNMF800 Series Nozzle
BFT23KH15	Receiver Dry-Break 800 Series 1-1/2" NPTM, Hydraulic Light FuelTrack	2" NPTM, LT	Dimensions - 13x8x8cm Weight - 1.16kg	Cap	BNHF800M Hydraulic Nozzle
BFT23KLS	Receiver Dry-Break 800 Series 2" NPTM, Mining Light FuelTrack	2" NPTM, LT	Dimensions - 13x8x8cm Weight - 1.16kg	Cap	BNMF800 Series Nozzle
BFT23KS	Receiver Dry-Break 800 Series 2" NPTM, Mining Medium FuelTrack	2" NPTM, MED	Dimensions - 13x8x8cm Weight - 1.16kg	Cap	BNMF800 Series Nozzle
BFT23KS-CT	Receiver Dry-Break 800 Series 2" NPTM, Mining Medium FuelTrack Cold Temp	2" NPTM, MED, CT	Dimensions - 13x8x8cm Weight - 1.16kg	Cap	BNMF800 Series Nozzle
BFT43KHS	Receiver Dry-Break 1000 Series 2" NPTM, Heavy FuelTrack	2" NPTM, HVY	Dimensions - 13x6x6cm Weight - 1.36kg	Cap	BNF1000 Series Nozzle
BFT43KLS	Receiver Dry-Break 1000 Series 2" NPTM, Light FuelTrack	2" NPTM, LT	Dimensions - 13x6x6cm Weight - 1.36kg	Cap	BNF1000 Series Nozzle
BFT43KS	Receiver Dry-Break 1000 Series 2" NPTM, Medium FuelTrack	2" NPTM, MED	Dimensions - 13x6x6cm Weight - 1.36kg	Cap	BNF1000 Series Nozzle
BFTCVR23KR2	Check Valve Receiver Dry-Break 800 Series 2" NPTM, Mining Medium FuelTrack	2" NPTM, MED	Dimensions - 24x8x8cm Weight - 1.58kg	Cap	BNMF800 Series Nozzle

Swivel - Auto ID

Part Number	Product Description	Tech Specs	Shipping Specs
BFT33	Steel Dry-Break Nozzle Swivel 2" NPTM - 1-1/2" NPTF, FuelTrack	2" NPTM, 1-1/2" NPTF	Dimensions - 10x7x7cm Weight - 1.13kg
BFT33-CT	Steel Dry-Break Nozzle Swivel 2" NPTM - 1-1/2" NPTF, FuelTrack Cold Temp	2" NPTM, 1-1/2" NPTF, CT	Dimensions - 10x7x7cm Weight - 1.13kg
BFT34	Steel Dry-Break Nozzle Swivel 2" NPTMF, FuelTrack	2" NPTM, 2" NPTF	Dimensions - 10x7x7cm Weight - 1.13kg
BFT34-CT	Steel Dry-Break Nozzle Swivel 2" NPTMF, FuelTrack Cold Temp	2" NPTM, 2" NPTF, CT	Dimensions - 10x7x7cm Weight - 1.13kg

Break Away Valve - Auto ID

Part Number	Product Description	Tech Specs	Shipping Specs
BFT4WR2-50	Break Away Valve Fixed End 2" BSPTM, FuelTrack	2" BSPTM	Dimensions - 29x11x11cm Weight - 3.16kg
BFT4WR2-50N	Break Away Valve Fixed End 2" NPTM, FuelTrack	2" NPTM	Dimensions - 29x11x11cm Weight - 3.16kg
BFT4WR2-50N-CT	Break Away Valve Fixed End 2" NPTM, FuelTrack Cold Temp	2" NPTM	Dimensions - 29x11x11cm Weight - 3.16kg
BFT4WR2-75	Break Away Valve Fixed End 3" BSPTM, FuelTrack	3" BSPTM	Dimensions - 29x13x13cm Weight - 5.5kg
BFT4WR2-75N	Break Away Valve Fixed End 3" NPTM, FuelTrack	3" NPTM	Dimensions - 29x13x13cm Weight - 5.5kg

FillSafe Zero - Auto ID

Part Number	Product Description	Tech Specs	Items Included	Compatible products
BFTFCV23 - CT	Flow Control Valve FillSafe Zero 800 Series 4" NPTM, Mining FuelTrack Cold Temp	4" NPTM, CT	Cap	BNMF800 Series Nozzle
BFTFCV23R	Flow Control Valve FillSafe Zero 800 Series 4" NPTM, Rail - FuelTrack	4" NPTM	Cap	BNRF800 Series Nozzle
BFTFCV23R - CT	Flow Control Valve FillSafe Zero 800 Series 4" NPTM, Rail FuelTrack Cold Temp	4" NPTM, CT	Cap	BNRF800 Series Nozzle
BFTFCV43	Flow Control Valve FillSafe Zero 1000 Series 4" NPTM, FuelTrack	4" NPTM	Cap	BNF1000 Series Nozzle
BFTFCV43 - CT	Flow Control Valve FillSafe Zero 1000 Series 4" NPTM, FuelTrack Cold Temp	4" NPTM, CT	Cap	BNF1000 Series Nozzle
BFTFCV50	Flow Control Valve FillSafe Zero 800 Series 2" NPTM, Mining FuelTrack	2" NPTM	Cap	BNMF800 Series Nozzle
BFTFCV50 - CT	Flow Control Valve FillSafe Zero 800 Series 2" NPTM, Mining FuelTrack Cold Temp	2" NPTM, CT	Cap	BNMF800 Series Nozzle
BFTFCV50R	Flow Control Valve FillSafe Zero 800 Series 2" NPTM, Rail FuelTrack	2" NPTM	Cap	BNRF800 Series Nozzle
BFTFCV50R - CT	Flow Control Valve FillSafe Zero 800 Series 2" NPTM, Rail FuelTrack Cold Temp	2" NPTM, CT	Cap	BNRF800 Series Nozzle
BFTFCV23	Flow Control Valve FillSafe Zero 800 Series 4" NPTM, Mining FuelTrack	4" NPTM	Cap	BNMF800 Series Nozzle



Splash Fill Auto ID



Go to

[Splash Fill Nozzle - Auto ID](#)

[Splash Fill Ring - Auto ID](#)

Splash Fill Nozzle - Auto ID



Part Number	Product Description	Tech Specs
BFTSW002A	Nozzle Splash Fill Nozzle DN20 Diesel AUS 3/4" NPTF, FuelTrack	3/4" NPTF
BFTSW010A	Nozzle Splash Fill Nozzle DN20 ULP AUS 3/4" NPTF, FuelTrack	3/4" NPTF
BFTSW018A	Nozzle Splash Fill Nozzle DN25 Diesel-AUS/ULP-USA 1" NPTF, FuelTrack	1" NPTF
BFTSW026A	Nozzle Splash Fill Nozzle DN20 Diesel USA 3/4" NPTF, FuelTrack	3/4" NPTF
BFTSW030A	Nozzle Splash Fill Nozzle DN20 ULP USA 3/4" NPTF, FuelTrack	3/4" NPTF
BFTSW034A	Nozzle Splash Fill Nozzle DN25 Diesel USA 1" NPTF, FuelTrack	1" NPTF

Splash Fill Ring - Auto ID



Part Number	Product Description	Tech Specs	Shipping Specs
BFTSW200	Splash Fill Nozzle Shaped Coil DIA 60mm ID, FuelTrack	60MM DIA	
BFTSW201	Splash Fill Nozzle Shaped Coil DIA 75mm ID, FuelTrack	75MM DIA	Weight - 0.02kg
BFTSW202	Splash Fill Nozzle Shaped Coil DIA 85mm ID, FuelTrack	85MM DIA	Weight - 0.02kg
BFTSW203	Splash Fill Nozzle Shaped Coil DIA 95mm ID, FuelTrack	95MM DIA	
BFTSW204	Splash Fill Nozzle Shaped Coil DIA 55mm ID, FuelTrack	55MM DIA	
BFTSW205	Splash Fill Nozzle Shaped Coil DIA 80mm ID, FuelTrack	80MM DIA	
BFTSW206	Splash Fill Nozzle Shaped Coil DIA 90mm ID, FuelTrack	90MM DIA	
BFTSW207	Splash Fill Nozzle Shaped Coil DIA 95mm ID, FuelTrack	95MM DIA	
BFTSW208	Splash Fill Nozzle Shaped Coil DIA 110mm ID, FuelTrack	110MM DIA	
BFTSW209	Splash Fill Nozzle Shaped Coil DIA 120mm ID, FuelTrack	120MM DIA	
BFTSW210	Splash Fill Nozzle Shaped Coil DIA 130mm ID, FuelTrack	130MM DIA	
BFTSW211	Splash Fill Nozzle Shaped Coil DIA 145mm ID, FuelTrack	145MM DIA	

Tools, Replacement Parts & Accessories

Banlaw tools and replacements parts simplify the maintenance of our products, and extend their serviceable life.



Go to

[Tools](#)

[Replacement Parts](#)

[Accessories](#)

Tools

Refueling Tools

Receiver Socket

Part Number	Product Description	Tech Specs
AUS23SOCKET	Dry-Break Socket Tool, Rail	TOOL
AUSRSOCKET	Dry-Break Socket Tool, Mining	TOOL

Fluid Transfer Tools

Lubecentral Socket

Part Number	Product Description	Tech Specs
BPLRSOCKET	Flush Face Socket Tool	TOOL

Overfill Protection Tools

Flow Control Valve Socket

Part Number	Product Description	Tech Specs
BFCVSOCKET	FillSafe Zero Socket Tool	TOOL

Replacement Parts

Refuelling Kits

Break Away Valve Repair Kit

Part Number	Product Description	Tech Specs	Shipping Specs	Items Included	Compatible products
AUS4WKIT	Break Away Valve Repair Kit	SPARE	Dimensions - 12x10x1cm Weight - 0.07kg	Inc Studs, Chain & O-Ring	Suits 2" Break Away Valves
AUS4WKIT-75	Break Away Valve Repair Kit	SPARE	Dimensions - 12x10x1cm Weight - 0.07kg	Inc Studs, Chain & O-Ring	Suits 3" Break Away Valves
AUS4WKIT-75HT	Break Away Valve Repair Kit - High Tensile	SPARE	Dimensions - 12x10x1cm Weight - 0.07kg	Inc Studs, Chain & O-Ring	Suits 3" Break Away Valves
AUS4WKIT-HT	Break Away Valve Repair Kit - High Tensile	SPARE	Dimensions - 12x10x1cm Weight - 0.07kg	Inc Studs, Chain & O-Ring	Suits 2" Break Away Valves

Nozzle Repair Kit

Part Number	Product Description	Tech Specs	Shipping Specs
AUS21A-P	Nozzle Plug Dry-Break, 800 Series	PLUG	
AUS22A-P	Nozzle Plug Dry-Break, 1000 Series	PLUG	
BNM800240A	Nozzle Handle Kit Dry-Break Repair Kit - D Handle Assembly	SPARE	Dimensions - 10x12x3cm Weight - 0.32kg

Check Valve Receiver Kit

Part Number	Product Description	Tech Specs	Shipping Specs	Items Included	Compatible products
BCVR23KIT	Check Valve Kit Dry-Break 800 Series, Mining	SPARE	Dimensions - 14x13x4cm Weight - 0.44kg		
BFTCVR23KIT	Check Valve Receiver Kit Dry-Break 800 Series, Mining - FuelTrack	SPARE	Dimensions - 13x13x7cm Weight - 0.44kg	Cap	Check Valve Receiver

Vent Servicing Kit

Part Number	Product Description	Tech Specs	Shipping Specs	Items Included
BFV225-KIT	Replacement Filter Kit Vent Fine Filtered 3um	KIT	Dimensions - 14x14x17cm Weight - 1.17kg	Fine Filtered Vent
BP125KIT	Replacement Filter Kit Vent Filtered 10um	KIT	Dimensions - 15x14x5cm Weight - 0.09kg	10um Filtered Vent

Refuelling Receiver Cap

Part Number	Product Description	Tech Specs	Shipping Specs	Compatible products
AUS23C	Receiver Cap Dry-Break 800 Series	CAP	Dimensions - 9x7x7cm Weight - 0.12kg	AUS23 Receiver
AUS43C	Receiver Cap Dry-Break 1000 Series	CAP	Dimensions - 9x7x7cm Weight - 0.3kg	AUS43 Receiver
AUS46C	Receiver Cap Dry-Break, Underground	CAP	Dimensions - 11x7x7cm Weight - 0.15kg	AUS46 Receiver

Accessories

Go to

[Refuelling Accessories](#)
[Fluid Transfer Accessories](#)
[Fuel Management Accessories](#)

Refuelling Accessories

Receiver Shell Drop Tube

Part Number	Product Description	Tech Specs	Shipping Specs
AUS24A045	Receiver Shell Weld Mount 45deg Drop Tube	WELD	Weight - 2.4kg
AUS24A090	Receiver Shell Weld Mount 90deg Drop Tube	WELD	
AUS24A930	Receiver Shell Weld Mount 45deg Drop Tube 1000 Series	WELD	

Dry Break Nozzle Adaptor

Warning: Dry Break Nozzle Adaptors override the auto-shutoff functionality of Dry Break Nozzles. They allow for Dry Break Nozzles to be adapted and used for 'Splash Fill' refuelling when on-site processes require such a solution. Before purchasing this product, please speak with a Banlaw Engineer to discuss process risk, operator training, and whether this item is actually the most appropriate solution.

Part Number	Product Description	Tech Specs	Shipping Specs	Compatible products
AUS6A	Splash Fill Pipe 800 Series Straight, Mining	ADAPTOR		BNM800 Series Nozzle
AUS6B	Splash Fill Pipe 800 Series Bent, Mining	ADAPTOR, 90 DEG	Weight - 1.2kg	BNM800 Series Nozzle
AUS6C	Splash Fill Pipe, Bent Pipe, Underground	ADAPTOR, 90 DEG		AUS45 Underground Nozzle

Vent Adaptor

Part Number	Product Description	Tech Specs	Shipping Specs
AUS25AA-1	Adaptor Weld Mount 2" NPTF	ADAPTOR	Weight - 0.39kg

Refuelling Accessories

Holsters & Anchors



Part Number	Product Description	Shipping Specs	Compatible products
AUS46014	Nozzle Anchor, Underground		
BFTNH201A	Nozzle Holster Tall 800 Series		BNM800 Series Nozzle
BFTNH202A	Nozzle Holster Tall 1000 Series	Weight - 14.6kg	BN1000 Series Nozzle
BFTNH203A	Nozzle Holster Short 800 Series	Weight - 5.8kg	BNM800 Series Nozzle
BFTNH204A	Nozzle Holster Short 1000 Series		BN1000 Series Nozzle
BP1000049	Nozzle Anchor 1000 Series		
BP800049	Nozzle Anchor 800 Series, Mining	Weight - 1.3kg	
BP800050	Nozzle Anchor 800 Series Bulk Fill, Mining		

Fluid Transfer Accessories

Receiver Cap - Fluid Transfer

Part Number	Product Description	Tech Specs	Shipping Specs
BPLR0C	Receiver Cap Flush Face Size 0	CAP	Dimensions - 10x7x3cm Weight - 0.07kg
BPLR10CC	Receiver Cap Flush Face Size 10	CAP	Dimensions - 6x6x6cm Weight - 0.13kg
BPLR10CC -CT	Receiver Cap Flush Face Size 10, Cold Temp	CAP, CT	Dimensions - 6x6x6cm Weight - 0.13kg
BPLR11CC	Receiver Cap Flush Face Size 11	CAP	Dimensions - 6x6x6cm Weight - 0.13kg
BPLR11CC - CT	Receiver Cap Flush Face Size 11, Cold Temp	CAP, CT	Dimensions - 6x6x6cm Weight - 0.13kg
BPLR1C	Receiver Cap Non-Evac Flush Face Size 01	CAP	Dimensions - 10x7x3cm Weight - 0.07kg
BPLR1CC	Receiver Cap Flush Face Size 01	CAP	Dimensions - 6x6x6cm Weight - 0.13kg
BPLR1CC - CT	Receiver Cap Flush Face Size 01, Cold Temp	CAP, CT	Dimensions - 6x6x6cm Weight - 0.13kg
BPLR2CC	Receiver Cap Flush Face Size 02	CAP	Dimensions - 6x6x6cm Weight - 0.13kg
BPLR2CC - CT	Receiver Cap Flush Face Size 02, Cold Temp	CAP, CT	Dimensions - 6x6x6cm Weight - 0.13kg
BPLR3CC	Receiver Cap Flush Face Size 03	CAP	Dimensions - 6x6x6cm Weight - 0.13kg
BPLR3CC - CT	Receiver Cap Flush Face Size 03, Cold Temp	CAP, CT	Dimensions - 6x6x6cm Weight - 0.13kg
BPLR4CC	Receiver Cap Flush Face Size 04	CAP	Dimensions - 6x6x6cm Weight - 0.13kg
BPLR4CC - CT	Receiver Cap Flush Face Size 04, Cold Temp	CAP, CT	Dimensions - 6x6x6cm Weight - 0.13kg
BPLR5CC	Receiver Cap Flush Face Size 05	CAP	Dimensions - 6x6x6cm Weight - 0.13kg
BPLR5CC - CT	Receiver Cap Flush Face Size 05, Cold Temp	CAP, CT	Dimensions - 6x6x6cm Weight - 0.13kg
BPLR6CC	Receiver Cap Flush Face Size 06	CAP	Dimensions - 6x6x6cm Weight - 0.13kg
BPLR6CC - CT	Receiver Cap Flush Face Size 06, Cold Temp	CAP, CT	Dimensions - 6x6x6cm Weight - 0.13kg
BPLR7CC	Receiver Cap Flush Face Size 07	CAP	Dimensions - 6x6x6cm Weight - 0.13kg
BPLR7CC - CT	Receiver Cap Flush Face Size 07, Cold Temp	CAP, CT	Dimensions - 6x6x6cm Weight - 0.13kg
BPLR8CC	Receiver Cap Flush Face Size 08	CAP	Dimensions - 6x6x6cm Weight - 0.13kg
BPLR8CC - CT	Receiver Cap Flush Face Size 08, Cold Temp	CAP, CT	Dimensions - 6x6x6cm Weight - 0.13kg
BPLR9CC	Receiver Cap Flush Face Size 09	CAP	Dimensions - 6x6x6cm Weight - 0.13kg
BPLR9CC - CT	Receiver Cap Flush Face Size 09, Cold Temp	CAP, CT	Dimensions - 6x6x6cm Weight - 0.13kg
BRC40-C	Receiver Cap Dry-Break Bulk Transfer	CAP	Dimensions - 10x7x3cm Weight - 0.07kg
GTXRCC	Receiver Cap Flush Face Grease	CAP	Dimensions - 10x6x6cm Weight - 0.6kg
GTXRCC - CT	Receiver Cap Flush Face Grease, Cold Temp	CAP	Dimensions - 6x6x6cm Weight - 0.25kg

Fluid Transfer Accessories

Nozzle Cap - Fluid Transfer

Part Number	Product Description	Tech Specs	Shipping Specs
BPLN10C	Nozzle Cap Flush Face Size 10	CAP	Dimensions - 10x7x3cm Weight - 0.07kg
BPLN11C	Nozzle Cap Flush Face Size 11	CAP	Dimensions - 10x7x3cm Weight - 0.07kg
BPLN1C	Nozzle Cap Flush Face Size 01	CAP	Dimensions - 10x7x3cm Weight - 0.07kg
BPLN2C	Nozzle Cap Flush Face Size 02	CAP	Dimensions - 10x7x3cm Weight - 0.07kg
BPLN3C	Nozzle Cap Flush Face Size 03	CAP	Dimensions - 10x7x3cm Weight - 0.07kg
BPLN4C	Nozzle Cap Flush Face Size 04	CAP	Dimensions - 10x7x3cm Weight - 0.07kg
BPLN5C	Nozzle Cap Flush Face Size 05	CAP	Dimensions - 10x7x3cm Weight - 0.07kg
BPLN6C	Nozzle Cap Flush Face Size 06	CAP	Dimensions - 10x7x3cm Weight - 0.07kg
BPLN7C	Nozzle Cap Flush Face Size 07	CAP	Dimensions - 10x7x3cm Weight - 0.07kg
BPLN8C	Nozzle Cap Flush Face Size 08	CAP	Dimensions - 10x7x3cm Weight - 0.07kg
BPLN9C	Nozzle Cap Flush Face Size 09	CAP	Dimensions - 10x7x3cm Weight - 0.07kg

Fuel Management Accessories

Splash Fill Gateway Terminal

Part Number	Product Description	Shipping Specs
BFTSW100	Gateway Terminal Splash Fill Nozzle, FuelTrack	Dimensions - 21x20x8cm Weight - 0.81kg

Splash Fill Coil Clamps

Part Number	Product Description	Tech Specs	Shipping Specs
BFTCCL	Coil Clamp Splash Fill Nozzle, FuelTrack	PKT 100	Dimensions - 19x18x7cm Weight - 0.29kg





**Contact Banlaw today if you need increased Accuracy,
Accountability, Security, or Productivity for your fluid assets.**

Australia / International

Telephone +61 2 4922 6300

Email sales@banlaw.com

Americas

Telephone +1 385 259 0456

Email americasales@banlaw.com

banlaw.com

