

Quick Drain Valve

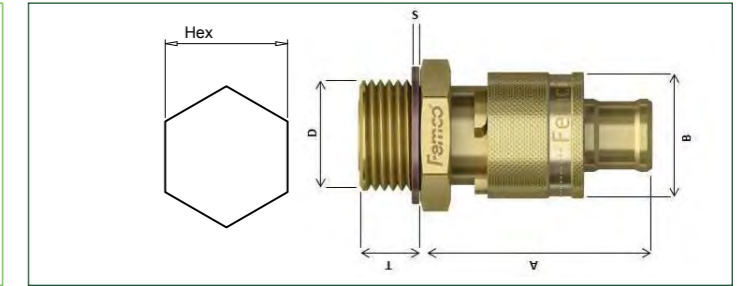
The Quick Drain oil drain valve is a two-in one solution which combines a drain plug with a drain connector. When it's time to perform an oil change, simply 'push and turn'. As a result the valve opens, allowing oil to be drained easily into a container. The Quick Drain plug is therefore exceedingly suitable for stationary machines such as generators. This oil drain valve also incorporates a locking system to ensure an effective seal creating a clean working environment.

Application: Engine oil, Hydraulic oil, Gearbox oil, Coolant, Lubricating oil

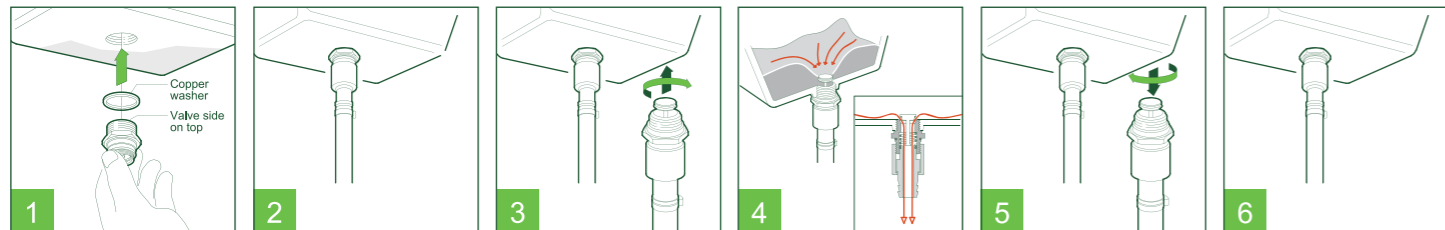
Material: Brass outside / Brass inside / Stainless steel spring

Temperature range: -20° / 200° Celsius

Valve: Brass with Viton O-ring / Valve



HOW TO DRAIN YOUR OIL (OR OTHER FLUIDS)



Metr. Sizes						
Thread size (D)		T	A	B	S	Hex
M12x1.25	6190010001	10	46	25	2	27
M12x1.5	6190010002	12	46	25	2	27
M12x1.75	6190010003	12	46	25	2	27
M14x1.25	6190010005	12	46	25	2	27
M14x1.5	6190010006	10	46	25	2	27
M14x1.5	6190010007	12	46	25	2	27
M14x2.0	6190010008	12	46	25	2	27
M16x1.5	6190010010	10	46	25	2	27
M16x1.5	6190010011	12	46	25	2	27
M18x1.5	6190010013	10	46	25	2	27
M18x1.5	6190010014	12	46	25	2	27
M20x1.5	6190010016	10	46	25	2	27
M20x1.5	6190010017	12	46	25	2	27
M22x1.5	6190010019	10	46	25	1,5	27
M22x1.5	6190010020	12	46	25	1,5	27

NPT						
Thread size (D)		T	A	B	S	Hex
1/4"-18-NPT	6160010001	10	46	25		27
3/8"-18-NPT	6160010003	10	46	25		27
1/2"-14-NPT	6160010005	10	46	25		27

UNF						
Thread size (D)		T	A	B	S	Hex
1/2"-20-UNF	6180010001	10	46	25	2	27
9/16"-18-UNF	6180010003	10	46	25	2	27
5/8"-18-UNF	6180010005	10	46	25	2	27
3/4"-16-UNF	6180010007	10	46	25	2	27

BSP						
Thread size (D)		T	A	B	S	Hex
1/2"-14-BSP	6170010001	10	46	25	2	27
1/4"-19-BSP	6170010004	10	46	25	2	27
3/8"-19-BSP	6170010008	10	46	25	2	27